



SCROLL CHUCK



SC

Standard Scroll Chuck
(Hard Jaws)

86 P



SL

Standard Slotter Chuck
(Hard Jaws)

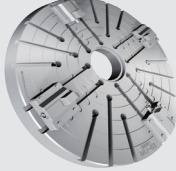
96 P



FSC

Standard Front Mounting
Scroll Chuck(Hard Jaws)

88 P



MU

Manual Chuck

98 P



TC

Standard Scroll Chuck
(Soft & Hard Top Jaws)

89 P



IC

Independent Chuck
(Hard Jaws)

100 P



FTC

Front Mounting Scroll
Chuck(Soft & Hard Top Jaws)

90 P



IC Mega Bore

Independent Chuck
(Hard Jaws)

102 P



FTU

Standard Front Mounting
Scroll Chuck(Hard Jaws)

92 P



ST

2-Jaw Scroll Chuck
(Soft Top Jaws)

93 P



SF

4-Jaw Scroll Chuck
(Hard Jaws)

94 P



SCS

6-Jaw Scroll Chuck
(Hard Jaws)

95 P

SC Standard Scroll Chuck (Hard Jaws)

Thru Hole Range : $\varnothing 16 \sim \varnothing 57$
Clamping Range : $\varnothing 2 \sim \varnothing 180$

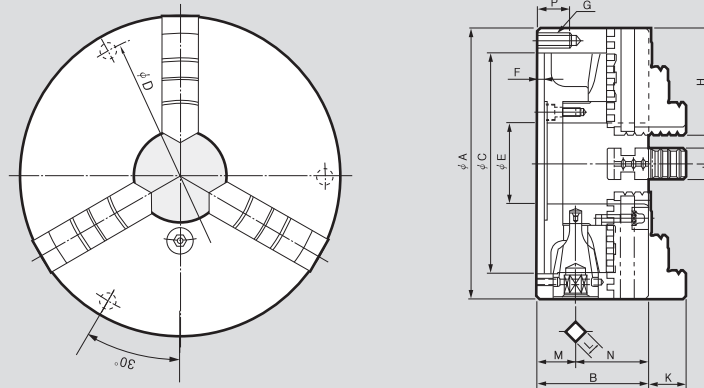


Application

Scroll chuck with hardened jaws

Technical features

Includes external and internal gripping jaws.



DIMENSIONS

	SC-85(3")	SC-110(4")	SC-130(5")	SC-165(6")	SC-190(7")
ΦA	85	110	130	167	192
B	44.1	56.85	59.5	65	75
ΦC(H6)	60	80	100	130	155
ΦD	73	95	115	147	172
ΦE	16	24	34	45	57
F	3.5	4.5	4.5	5	5
G	3-M6	3-M8	3-M8	3-M10	3-M10
H	35	42	50	65	75
J	11	14	16	19	22
K	14.6	18.75	20.1	25.07	30.06
L	7	8	8	10	11
M	17	24.5	22.5	24	27.5
N	27.1	32.35	37	41	47.5
P	12	16	16	20	20

SPECIFICATIONS

	SC-85 (3")	SC-110 (4")	SC-130 (5")	SC-165 (6")	SC-190 (7")
Max. Static Gripping Force [kN(kgf)]	9(918)	12(1224)	15(1530)	31(3161)	31(3161)
Clamping Range External [Ømm]	2~70	3~94	3~110	3~160	4~180
Clamping Range Internal [Ømm]	24~64	29~84	33~100	48~150	56~170
Handle Torque [N·m(kgf·m)]	29.4(3.0)	44.1(4.1)	63.7(6.5)	88.3(9.0)	107.9(11.0)
Max. r.p.m. [min ⁻¹]	2500	2500	2500	4000	3500
Weight [kg]	1.5	3.1	4.4	11.4	12.2
Moment of inertia [N·m ² (kg·m ²)]	0.05(0.005)	0.17(0.017)	0.35(0.036)	1.18(0.12)	2.35(0.24)

※ Maximum turning speed is based upon actual measurement.

SC Standard Scroll Chuck (Hard Jaws)

Thru Hole Range : $\varnothing 75 \sim \varnothing 130$
Clamping Range : $\varnothing 5 \sim \varnothing 346$

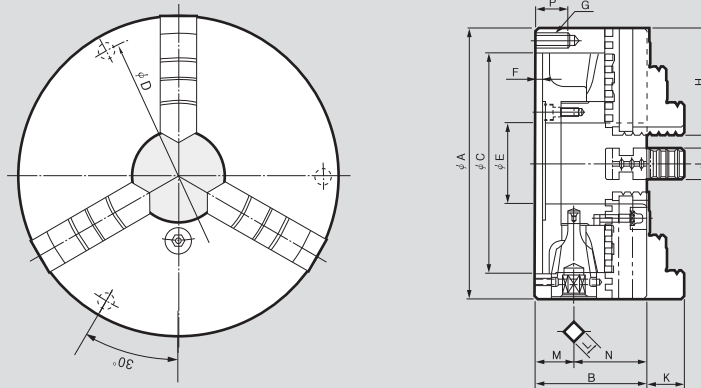


Application

Scroll chuck with hardened jaws

Technical features

Includes external and internal gripping jaws.



DIMENSIONS

	SC-230(9")	SC-273(10")	SC-310(12")	SC-355(14")	SC-405(16")
ΦA	232	273	310	355	405
B	84	86	96	110	114.5
ΦC(H6)	190	230	260	300	345
ΦD	210	250	285	328	375
ΦE	75	89	100	105	130
F	6	6	7	8	8
G	3-M12	3-M12	3-M12	6-M12	6-M12
H	85	98	110	133	133
J	24	28	30	35	35
K	35.04	40.02	45.08	62.98	63
L	12	12	14	14	15
M	29.5	31.5	31.5	42.4	42
N	54.5	54.5	64.5	67.6	72.5
P	25	25	25	36	36

SPECIFICATIONS

	SC-230 (9")	SC-273 (10")	SC-310 (12")	SC-355 (14")	SC-405 (16")
Max. Static Gripping Force [kN(kgf)]	37(3773)	46(4691)	55(5608)	40.5(4130)	45(4589)
Clamping Range External [Ømm]	5~200	5~260	10~300	25~315	25~346
Clamping Range Internal [Ømm]	62~210	70~250	86~290	107~290	113~324
Handle Torque [N·m(kgf·m)]	147(15.0)	176.5(18.0)	206(21.0)	225.6(23.0)	245(25.0)
Max. r.p.m. [min ⁻¹]	2900	2500	2200	1500	1500
Weight [kg]	21.2	28	41	54	74
Moment of inertia [N·m ² (kg·m ²)]	6.27(0.64)	9.90(1.01)	23.0(2.35)	37.2(3.8)	67.6(6.9)

※ Maximum turning speed is based upon actual measurement.

FSC Standard Front-Mounting Scroll Chuck (Hard Jaws)

Thru Hole Range : $\varnothing 34 \sim \varnothing 100$
Clamping Range : $\varnothing 3 \sim \varnothing 300$

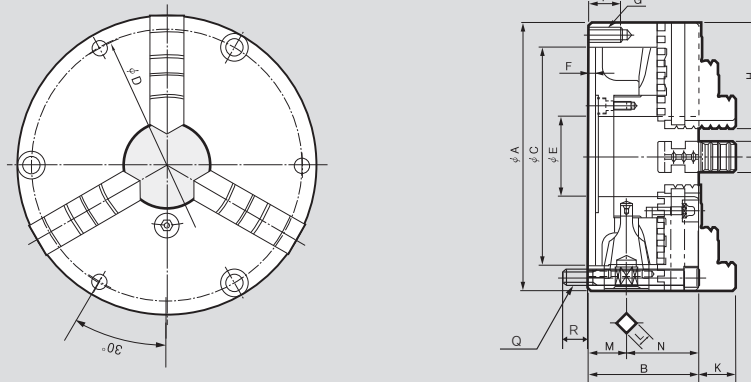


Application

Scroll chuck with hardened jaws (Front mounting)

Technical features

Includes external and internal gripping jaws



DIMENSIONS

	FSC-85(3")	FSC-110(4")	FSC-130(5")	FSC-165(6")	FSC-190(7")	FSC-230(9")	FSC-273(10")	FSC-310(12")
ΦA	85	110	130	167	192	232	273	310
B	44.1	56.85	59.5	65	75	84	86	96
$\Phi C(H6)$	60	80	100	130	155	190	230	260
ΦD	73	95	115	147	172	210	250	285
ΦE	16	24	34	45	57	75	89	100
F	3.5	4.5	4.5	5	5	6	6	7
G	3-M6	3-M8	3-M8	3-M10	3-M10	3-M12	3-M12	3-M12
H	35	42	50	65	75	87	98	110
J	11	14	16	19	22	24	28	30
K	14.6	18.75	20.1	25.07	30.06	35.04	40.02	45.08
L	7	8	8	10	11	12	12	14
M	17	24.5	22.5	24	27.5	29.5	31.5	31.5
N	27.1	32.35	37	41	47.5	54.5	54.5	64.5
P	13	16	16	20	20	25	25	25
Q	3-M6x50	3-M8x60	3-M8x65	3-M10x70	3-M10x85	3-M12x90	3-M12x90	3-M12x100
R	12.4	11.65	14	15.5	20.5	20	20	20

SPECIFICATIONS

	FSC-85(3")	FSC-110(4")	FSC-130(5")	FSC-165(6")	FSC-190(7")	FSC-230(9")	FSC-273(10")	FSC-310(12")
Max. Static Gripping Force [kN(kgf)]	9(918)	12(1224)	15(1530)	31(3161)	31(3161)	37(3773)	46(4691)	55(5608)
Clamping Range External [\varnothing mm]	2~70	3~94	3~110	3~160	3~160	4~180	5~260	10~300
Clamping Range Internal [\varnothing mm]	24~64	29~84	33~100	48~150	56~170	62~210	70~250	86~290
Handle Torque [N-m(kgf-m)]	29.4(3.0)	44.1(4.1)	63.7(6.5)	88.3(9.0)	107.9(11.0)	147(15.0)	176.5(18.0)	206(21.0)
Max. r.p.m. [min^{-1}]	2500	2500	2500	4000	3500	2900	2500	2200
Weight [kg]	1.5	3.1	4.4	11.4	12	21.2	28	41
Moment of inertia [N-m ² (kg-m ²)]	0.05(0.005)	0.17(0.017)	0.35(0.036)	1.18(0.12)	2.35(0.24)	6.27(0.64)	9.90(1.01)	23.0(2.35)

※ Maximum turning speed is based upon actual measurement.

※ Specifications are subject to change without notice.

TC Standard Scroll Chuck (Soft and Hard top Jaws)

Thru Hole Range : $\varnothing 57 \sim \varnothing 100$
Clamping Range : $\varnothing 4 \sim \varnothing 300$

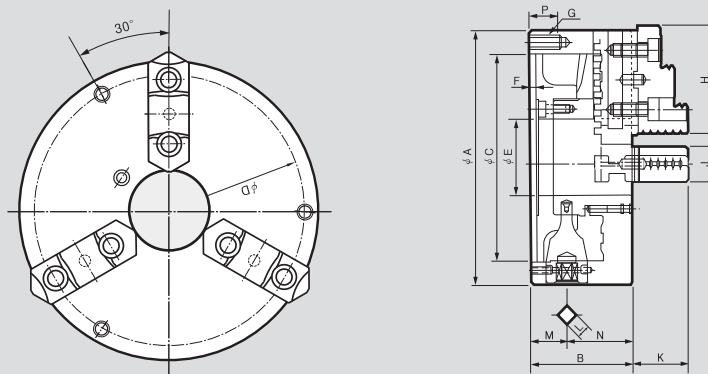


Application

Two-piece, base jaw and to jaw configuration (Includes hard and soft jaws)

Technical features

Reversible hard jaws.



DIMENSIONS

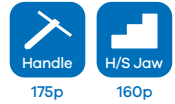
	TC-190(7")	TC-230(9")	TC-273(10")	TC-310(12")
$\varnothing A$	192	232	273	310
B	78.7	84	86	96
$\varnothing C$	155	190	230	260
$\varnothing D$	172	210	250	285
$\varnothing E$	57	75	89	100
F	5	6	6	7
G	3-M10	3-M12	3-M12	3-M12
H	80.5	90.5	103.5	115.5
J	28	32	35	40
K	42.8	53.8	56	56.08
L	11	12	12	14
M	27.5	29.5	31.5	31.5
N	51.2	54.5	54.5	64.5
P	20	25	25	25
Mounting bolt	3-M10	3-M12	3-M12	3-M12

SPECIFICATIONS

	TC-190(7")	TC-230(9")	TC-273(10")	TC-310(12")
Max. Static Gripping Force [kN(kgf)]	31(3161)	37(3773)	46(4691)	55(5608)
Clamping Range External [\varnothing mm]	4~180	5~220	5~260	10~300
Clamping Range Internal [\varnothing mm]	56~170	62~210	70~250	86~290
Handle Torque [N·m(kgf·m)]	107.9(11.0)	147(15.0)	173.5(18.0)	206(21.0)
Max. r.p.m. [min^{-1}]	3500	2900	2500	2200
Weight [kg]	12.2	21.2	28	41
Moment of inertia [N·m ² (kg·m ²)]	2.35(0.24)	6.24(0.64)	9.90(1.01)	23.0(2.35)

※ Maximum turning speed is based upon actual measurement.

FTC Front-Mounting Scroll Chuck (Soft and Hard top Jaws)



Application

Front mounting scroll chuck with two-piece jaws

Technical features

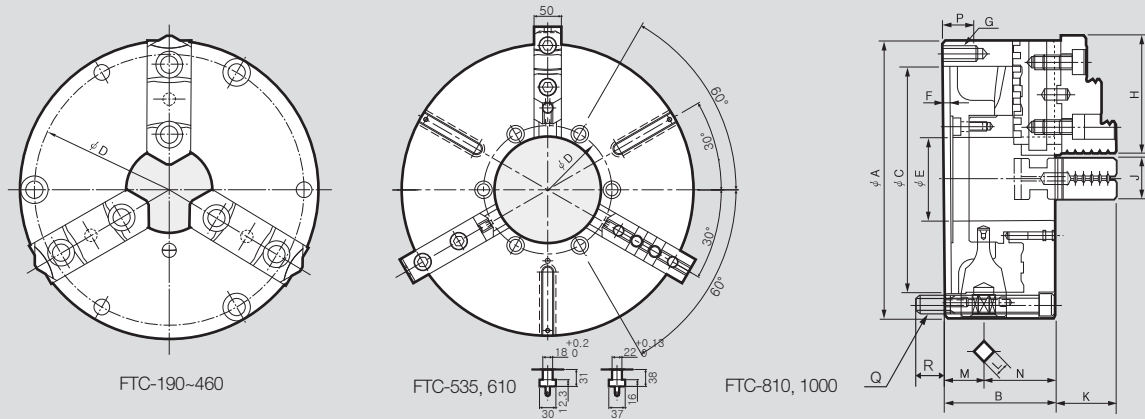
Reversible hard jaws

SPECIFICATIONS

	FTC-165	FTC-190(7")	FTC-230(9")	FTC-273(10")	FTC-310(12")
Max. Static Gripping Force [kN(kgf)]	31(3161)	31(3161)	37(3773)	46(4691)	55(5608)
Clamping Range External [Ømm]	3~160	4~180	5~220	5~260	10~300
Clamping Range Internal [Ømm]	55~150	56~170	62~210	70~250	86~290
Handle Torque [N·m(kgf·m)]	88(9.0)	107.9(11.0)	147(15.0)	176.5(18.0)	206(21.0)
Max. r.p.m. [min ⁻¹]	4000	3500	2900	2500	2200
Weight [kg]	9	12.2	21.2	28	41
Moment of inertia [N·m ² (kg·m ²)]	0.033	0.62(0.063)	1.61(0.163)	2.63(0.265)	5.85(0.588)

	FTC-460(18")	FTC-535(21")	FTC-610(24")	FTC-810(32")	FTC-1000(40")
Max. Static Gripping Force [kN(kgf)]	65(6650)	73(7400)	80(8200)	110(11216)	110(11216)
Clamping Range External [Ømm]	40~410	45~481	130~576	270~810	340~990
Clamping Range Internal [Ømm]	152~436	155~499	235~592	390~800	450~940
Handle Torque [N·m(kgf·m)]	255.0(26)	313.9(32)	372.7(38)	588(60)	588(60)
Max. r.p.m. [min ⁻¹]	1200	950	850	650	470
Weight [kg]	106	182	238	480	780
Moment of inertia [N·m ² (kg·m ²)]	124(12.6)	287(29.3)	488(49.8)	598(61)	598(61)

※ Maximum turning speed is based upon actual measurement.

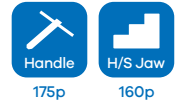


DIMENSIONS

	FTC-165	FTC-190(7")	FTC-230(9")	FTC-273(10")	FTC-310(12")	FTC-460(18")	FTC-535(21")	FTC-610B(24")	FTC-810(32")	FTC-1000(40")
ΦA	167	192	232	273	310	460	535	610	810	1000
B	69	78.7	84	86	96	114	143	143	180	196
$\Phi C(H6)$	130	155	190	230	260	400	270	380	520	910
ΦD	147	172	210	250	285	425	235	315	425	610
ΦE	47	57	75	89	100	190	195	275	375	560
F	5	5	6	6	7	8	12	14	16	16
G	3-M10	3-M10	3-M12	3-M12	3-M12	-	-	-	-	-
H	67.3	80.5	90.5	103.5	115.5	140(130)	150(130)	130	140	140
J	26	28	32	35	40	50	50	50	70	70
K	38.57	42.8	53.8	56	56.08	79.8	82	82	95	95
L	10	11	12	12	14	17	22	22	22	22
M	24	27.5	29.5	31.5	31.5	38.2	57.5	57.5	64	69.5
N	45	51.2	54.5	54.5	64.5	75.8	85.5	85.5	116	126.5
P	20	20	25	25	25	-	-	-	-	-
Q	3-M10x75	3-M10x85	3-M12x90	3-M12x90	3-M12x105	3-M16x120	3-M20x140	3-M20x140	3-M24x170	3-M24x200
R	16.5	16.8	20	20	20	24	19	18	15	24

FTU Standard Front-Mounting Scroll Chuck (Hard Jaws)

Thru Hole Range : $\varnothing 32 \sim \varnothing 103$
Clamping Range : $\varnothing 3 \sim \varnothing 300$

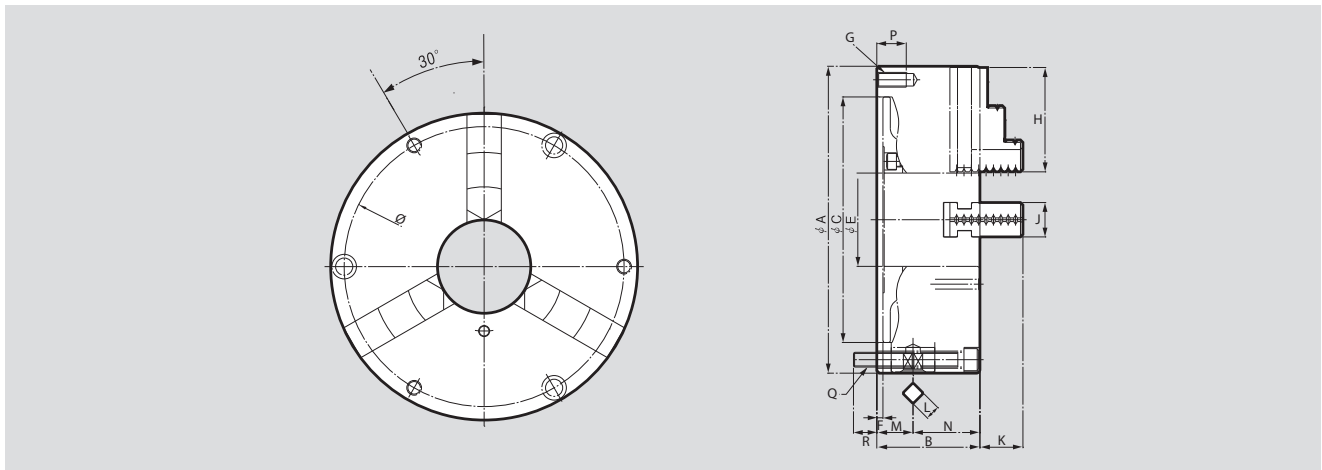


Application

Scroll chuck with hardened jaws (Front mounting).

Technical features

Includes a set of one-piece hard jaws.
Two-piece hard jaws and soft jaws are available as additional options.



DIMENSIONS

	FTU-125	FTU-160	FTU-200	FTU-250	FTU-315
ΦA	125	160	200	250	315
B	56	65	75	85	96
ΦC	95	125	160	200	260
ΦD	108	140	176	224	286
ΦE	32	42	55	76	103
F	4	4	4	5	5
G	3-M8	3-M10	3-M10	3-M12	3-M126
H	50	65	75	85	110
J	20	20	25	28	32
K	20	29	32	34	43
L	8	10	11	12	14
M	21	24	27.5	30.5	31.5
N	35	41	47.5	54.5	64.5
P	16	20	20	24	32
Q	3-M8x60	6-M10x70	6-M10x80	6-M12x90	6-M16x100
R	13	16	16	18	21

SPECIFICATIONS

	FTU-125	FTU-160	FTU-200	FTU-250	FTU-315
Max. Static Gripping Force [kN(kgf)]	15(1530)	31(3161)	37(3773)	46(4691)	55(5608)
Clamping Range External [Ømm]	3~110	3~1655	4~190	5~220	10~300
Clamping Range Internal [Ømm]	33~100	48~145	56~180	62~230	86~290
Handle Torque [N-m(kgf-m)]	63.7(6.5)	88.3(9.0)	147.0(15.0)	176.5(18.0)	206.0(21.0)
Max. r.p.m. [min ⁻¹]	2500	4000	2900	2500	2200
Weight [kg]	4.0	10.5	17.0	25.0	42.0
Moment of inertia [N-m ² (kg-m ²)]	0.32	1.02	4.95	7.75	21.0

※ Specifications are subject to change without notice.

ST 2Jaw Scroll Chuck (Soft top Jaws)

Thru Hole Range : $\varnothing 57 \sim \varnothing 100$
Clamping Range : $\varnothing 4 \sim \varnothing 300$

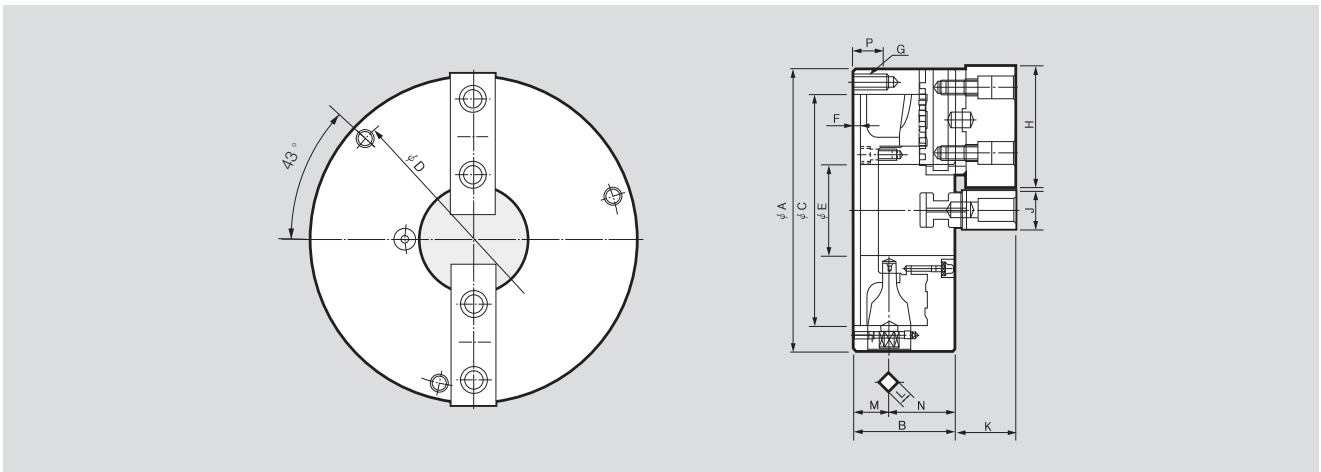


Application

Front mounting scroll chuck with two-piece jaws

Technical features

Suitable for clamping valves, pipe fittings and irregular parts



DIMENSIONS

	ST-190(7")	ST-230(9")	ST-273(10")	ST-310(12")
$\varnothing A$	192	232	273	310
B	78.7	84	86	96
$\varnothing C(H6)$	155	190	230	260
$\varnothing D$	172	210	250	285
$\varnothing E$	57	75	89	100
F	5	6	6	7
G	3-M10	3-M12	3-M12	3-M12
H	88	100	110	125
J	32	32	35	40
K	42.8	49.8	48	59.3
L	11	12	12	14
M	27.5	29.5	31.5	31.5
N	51.2	54.5	54.5	64.5
P	20	25	25	25

SPECIFICATIONS

	ST-190(7")	ST-230(9")	ST-273(10")	ST-310(12")
Max. Static Gripping Force [kN(kgf)]	20.7(2110)	24.7(2518)	46(4691)	55(5608)
Clamping Range External [\varnothing mm]	4~180	5~220	5~260	10~300
Clamping Range Internal [\varnothing mm]	62~170	70~210	70~250	86~290
Handle Torque [N·m(kgf·m)]	73.5(7.5)	98(10.0)	176.5(18.0)	206(21.0)
Max. r.p.m. [min^{-1}]	3500	2900	2500	2200
Weight [kg]	12.6	21.4	28	41
Moment of inertia [N·m ² (kg·m ²)]	2.55(0.26)	6.27(0.64)	9.90(1.01)	23.0(2.35)

※ Maximum turning speed is based upon actual measurement.

SF 4-Jaw Scroll Chuck (Hard Jaws)

Thru Hole Range : $\varnothing 57 \sim \varnothing 100$
Clamping Range : $\varnothing 4 \sim \varnothing 300$

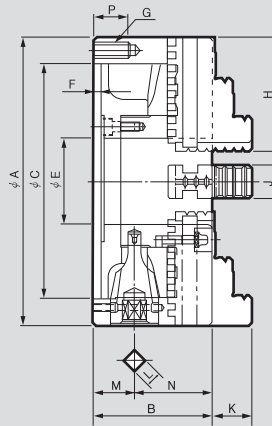
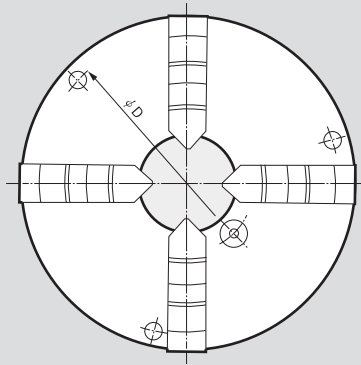


Application

4-Jaw Scroll chuck

Technical features

Suitable for clamping square parts



DIMENSIONS

	SF-190(7")	SF-230(9")	SF-273(10")	SF-310(12")
$\varnothing A$	192	232	273	310
B	75	84	86	96
$\varnothing C(H6)$	155	190	230	260
$\varnothing D$	172	210	250	285
$\varnothing E$	57	75	89	100
F	5	6	6	7
G	3-M10	3-M12	3-M12	3-M12
H	75	87	98	110
J	22	24	28	30
K	30.06	35.04	40.02	45.08
L	11	12	12	14
M	27.5	29.5	31.5	31.5
N	47.5	54.5	54.5	64.5
P	20	25	25	25

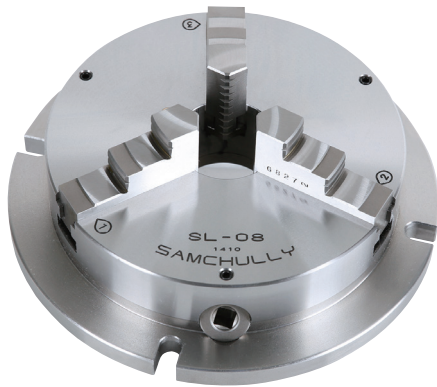
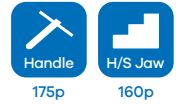
SPECIFICATIONS

	SF-190(7")	SF-230(9")	SF-273(10")	SF-310(12")
Max. Static Gripping Force [kN(kgf)]	31(3161)	37(3773)	46(4691)	55(5608)
Clamping Range External [\varnothing mm]	4~180	5~220	5~260	10~300
Clamping Range Internal [\varnothing mm]	56~170	62~210	70~250	86~290
Handle Torque [N·m(kgf·m)]	107.9(11.0)	147(15.0)	176.5(18.0)	206(21.0)
Max. r.p.m. [min^{-1}]	3500	2900	2500	2200
Weight [kg]	12.5	21.5	28	41
Moment of inertia [N·m ² (kg·m ²)]	2.45(0.25)	6.37(0.65)	9.90(1.01)	23.0(2.35)

※ Maximum turning speed is based upon actual measurement.

SL Standard Slotter Chuck (Hard Jaws)

Thru Hole Range : $\varnothing 60 \sim \varnothing 100$
Clamping Range : $\varnothing 4 \sim \varnothing 266$

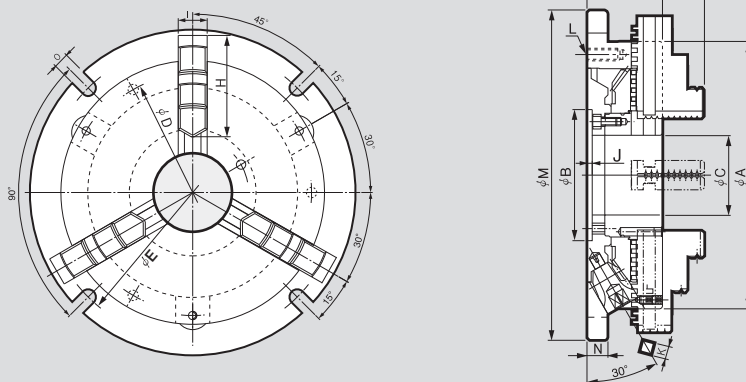


Application

Easy installation and operation

Technical features

Mounted adaptor plate



DIMENSIONS

	SL-08	SL-10	SL-12
$\varnothing A$	215	255	305
$\varnothing B(HC6)$	110	125	160
$\varnothing C$	60	76	100
$\varnothing D$	190.5	230	280
$\varnothing E$	240	286	340
F	35.04	40.02	45.08
G	64	72	76
H	85	98	110
I	25	28	30
J	4	4.5	5
K	11	12	14
L	M10	M12	M12
M	266	315	370
N	17	20	22
O	13	15	17

SPECIFICATIONS

	SL-08	SL-10	SL-12
Max. Static Gripping Force [kN(kgf)]	37(3,800)	46(4,700)	55(5,620)
Clamping Range External [\varnothing mm]	4~182	4~220	5~266
Clamping Range Internal [\varnothing mm]	58~174	68~212	80~263
Handle Torque [N·m(kgf·m)]	117.7(13)	176.5(18)	196.2(20)
Compatibility Jaw	SC-230	SC-273	SC-310
Weight [kg]	17.6	27.7	40

※ Maximum turning speed is based upon actual measurement.



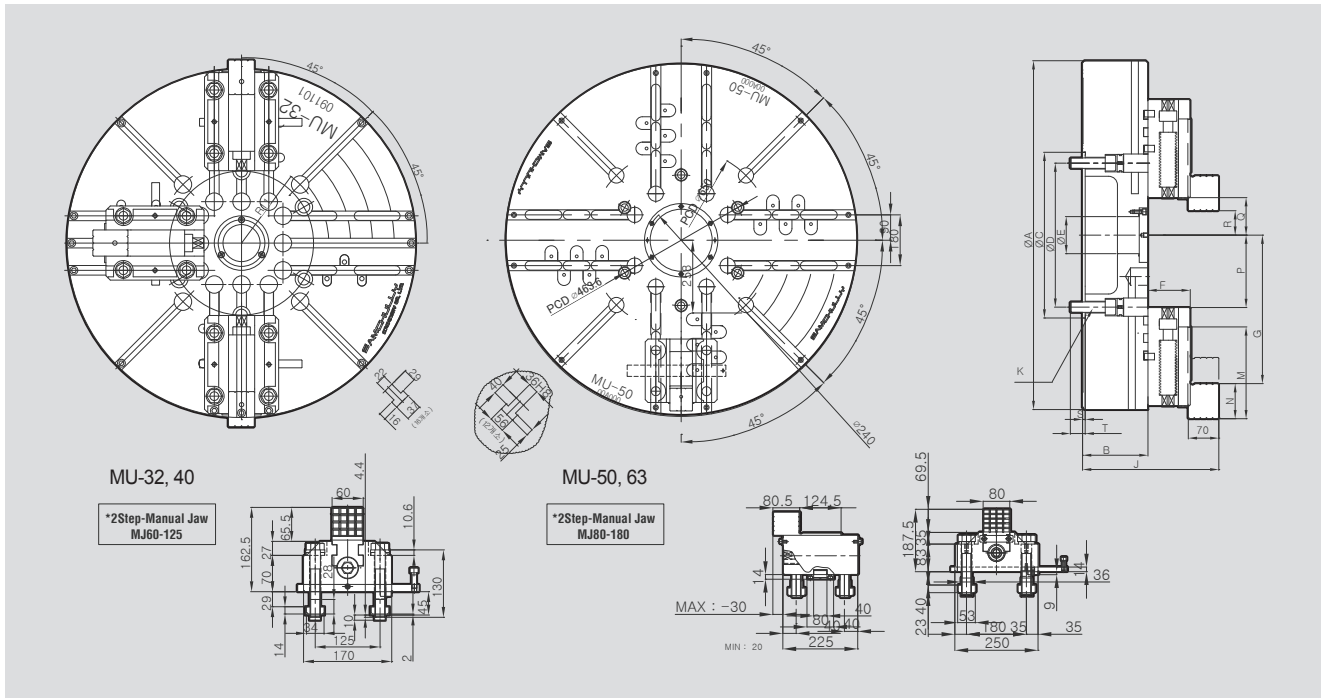
Application

Easy to operate scroll chuck with stepped jaws.

SPECIFICATIONS

	MU-32	MU-40	MU-50	MU-63
Box Jaw Stroke [mm]	60	60	50	50
Max. Static Gripping Force. [kN(kgf)]	-	-	-	-
Clamping Range Max. [mm]	681	885	1050	1450
Clamping Range Min. [mm]	112	316	281	321
Max. r.p.m. [min^{-1}]	650	500	360	400
Weight [kg]	350	800	1250	1600
Moment of inertia [$\text{N}\cdot\text{m}^2(\text{kg}\cdot\text{m}^2)$]	-	-	-	-

※ Maximum turning speed is based upon actual measurement.
 ※ T-Slot can be changed at the request.



DIMENSIONS

	MU-32	MU-40	MU-50	MU-63
ΦA	800	1000	1250	1600
$\Phi B(7\phi)$	150	150	180	240
ΦC	380	520	520	1020
ΦD	330.2	463.6	463.6	956
ΦE	85	178	220	320
F	97	97	124.5	124.5
G max	340.5	442.5	525	725
J	312.5	312.5	367.5	427.5
K	6-M24x80L	6-M24x90L	6-M24x100L	12-M24x140L
M	210.5	210.5	205	205
N	80.5	80.5	80.5	80.5
P	166	268	345	365
Q	86	188	170.5	190.5
R min	56	158	140.5	160.5
S	6	8	8	8
T	34	41	54	38

IC Independent Chuck (Hard Jaws) (200mm - 400mm)

Thru Hole Range : $\varnothing 50 \sim \varnothing 90$
Clamping Range : $\varnothing 75 \sim \varnothing 360$

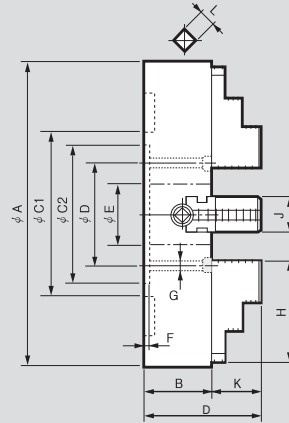
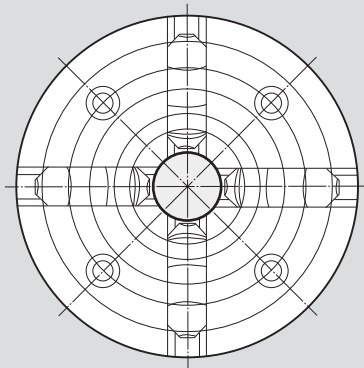


Application

Independent chuck with independently moving jaws

Technical features

Chucks 12 inches and larger add versatility with t-slots



DIMENSIONS

	IC-08	IC-10	IC-12	IC-14	IC-16
A	200	250	300	350	400
B	75	80	90	90	100
C1	-	165	186	210	230
C2	175	150	170	190	210
D	155	125	140	160	180
E	50	55	65	75	90
F	6	7	6	8	8
G	M12	M12	M12	M12	M16
H	75	90	100	110	120
J	30	30	35	35	40
K	30	35	40	45	50
L	10	10	12	12	14

SPECIFICATIONS

	IC-08	IC-10	IC-12	IC-14	IC-16
Max. Static Gripping Force [kN(kgf)]	1000	1400	1600	1700	2000
Clamping Range External [Ømm]	12	12	16	20	20
Clamping Range Internal [Ømm]	180	230	270	320	370
Max. r.p.m. [min^{-1}]	1600	1600	1400	1400	1200
Weight [kg]	14.8	21	29.5	40	56.5
Moment of inertia [$\text{N}\cdot\text{m}^2(\text{kg}\cdot\text{m}^2)$]	0.3	0.6	1.4	2.9	4.5

※ Maximum turning speed is based upon actual measurement.

※ Specifications are subject to change without notice.

IC Independent Chuck (Hard Jaws) (450mm - 813mm)

Thru Hole Range : $\varnothing 100 \sim \varnothing 140$
Clamping Range : $\varnothing 220 \sim \varnothing 750$

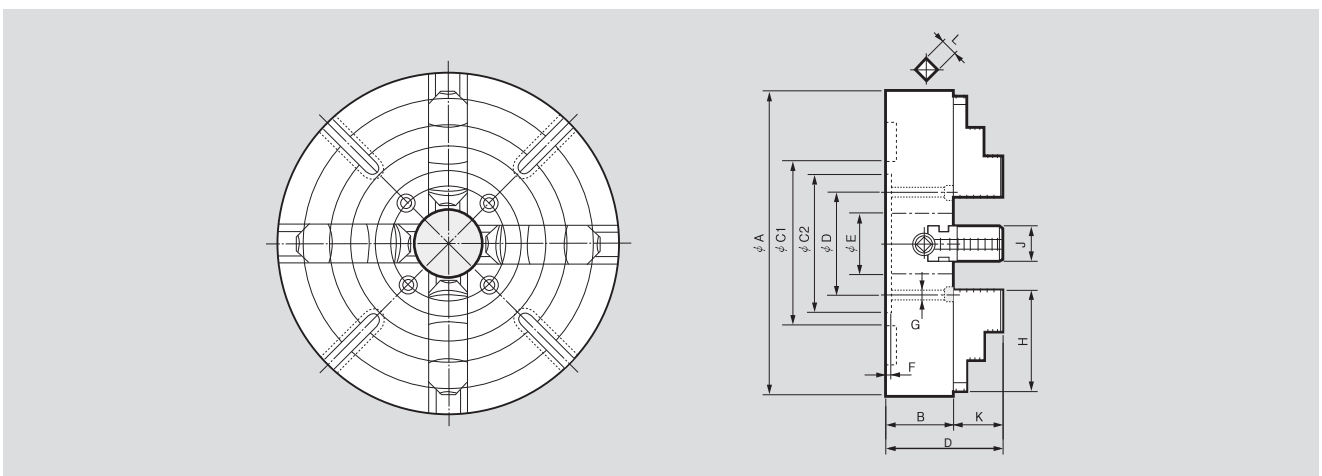


Application

Independent chuck with independently moving jaws

Technical features

Chucks 12 inches and larger add versatility with t-slots



DIMENSIONS

	IC-18	IC-20	IC-24	IC-28	IC-32
A	450	500	600	710	800
B	105	110	120	120	130
C1	250	272	330	382	440
C2	230	250	300	350	400
D	200	220	260	300	350
E	100	110	120	140	140
F	8	8	10	12	12
G	M16	M16	M20	M20	M20
H	130	140	160	180	200
J	40	45	50	50	60
K	55	60	70	70	89
L	14	14	14	14	24

SPECIFICATIONS

	IC-18	IC-20	IC-24	IC-28	IC-32
Max. Static Gripping Force [kN(kgf)]	2000	2200	2300	2396	2447
Clamping Range External [Ømm]	20	20	25	30	40
Clamping Range Internal [Ømm]	420	460	560	660	750
Max. r.p.m. [min^{-1}]	1200	900	900	900	600
Weight [kg]	70	90	150	247	357
Moment of inertia [$\text{N}\cdot\text{m}^2(\text{kg}\cdot\text{m}^2)$]	7	11.8	25.3	58	103

※ Maximum turning speed is based upon actual measurement.

※ Specifications are subject to change without notice.

IC Independent Chuck (Hard Jaws) (500mm - 600mm) **MEGA BORE**

Thru Hole Range : $\varnothing 180 \sim \varnothing 275$
Clamping Range : $\varnothing 450 \sim \varnothing 550$

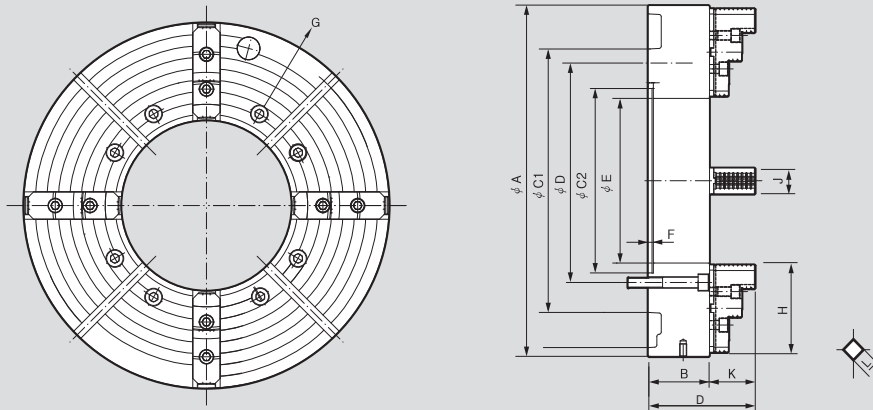


Application

Mega-bore facilitates work on large oil pipe

Technical features

Jaws actuate independently via screw bar
A set of both hard jaws and soft jaws are included



DIMENSIONS

	IC-2018	IC-2023	IC-2423	IC-2427
$\varnothing A$	500	500	600	600
B	110	110	140	140
$\varnothing C2$	260	300	420	420
$\varnothing D$	230	270	463.6	463.6
$\varnothing E$	185	230	230	275
F	-	8	10	10
G	M16	M16	M24	M24
H	135	140	200	200
J	45	45	60	60
K	83.45	83.45	104.15	104.15
L	14	14	24	24

SPECIFICATIONS

	IC-2018	IC-2023	IC-2423	IC-2427
Max. Static Gripping Force [kN(kgf)]	27.4(2800)	27.4(2800)	28.5(2904)	30(3056)
Clamping Range External [\varnothing mm]	460	460	550	550
Clamping Range Internal [\varnothing mm]	450	450	530	550
Max. r.p.m. [min^{-1}]	800	800	800	800
Weight [kg]	180	170	350	340
Moment of inertia [$\text{N}\cdot\text{m}^2(\text{kg}\cdot\text{m}^2)$]	54.9(5.6)	51.41(5.3)	61.74(6.3)	61.74(6.3)

- ※ Soft & Hard jaws are basic components.
- ※ Maximum turning speed is based upon actual measurement.
- ※ Specifications are subject to change without notice.

IC Independent Chuck (Hard Jaws) (600mm - 1000mm) **MEGA BORE**

Thru Hole Range : $\varnothing 320 \sim \varnothing 560$
Clamping Range : $\varnothing 550 \sim \varnothing 1000$

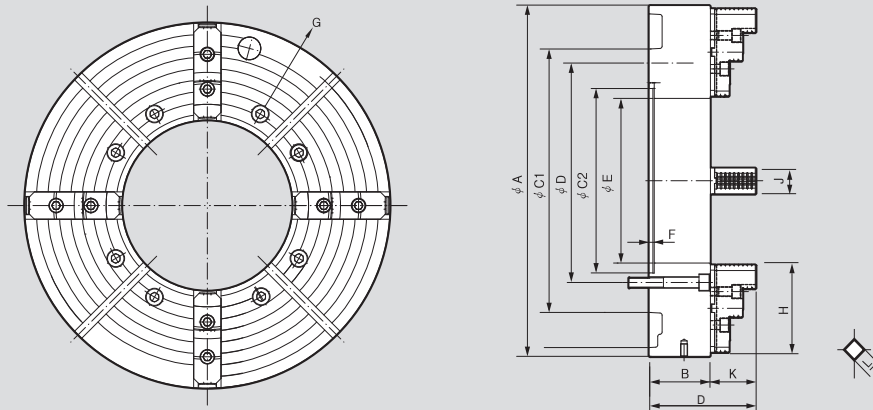


Application

High durability by applying advanced cast irons
Suitable for machining materials such as oil pipe lines and industrial pipes
Independent clamps of each four jaws

Technical features

Best for compatibility as detailed size management and high-quality
Ideal for using general lathe(KS, JIS standard)



DIMENSIONS

	IC-2432	IC-3232	IC-3237	IC-4056
ΦA	600	800	800	1000
B	140	140	140	160
$\Phi C2$	420	420	420	650
ΦD	463.6	463.6	463.6	700
ΦE	320	325	375	560
F	10	12	12	10
G	M24	M24	M24	M22
H	200	200	200	200
J	60	60	60	60
K	104.15	104.15	104.15	104.15
L	24	24	24	-

SPECIFICATIONS

	IC-2432	IC-3232	IC-3237	IC-4056
Max. Static Gripping Force [kN(kgf)]	30(3056)	32.4(3300)	32.4(3300)	36(3700)
Clamping Range External [\varnothing mm]	550	750	750	920
Clamping Range Internal [\varnothing mm]	550	730	730	840
Max. r.p.m. [min^{-1}]	800	600	600	480
Weight [kg]	340	463	490	660
Moment of inertia [$\text{N}\cdot\text{m}^2(\text{kg}\cdot\text{m}^2)$]	61.74(6.3)	382(39)	382(39)	-

- ※ Soft & Hard jaws are basic components.
- ※ Maximum turning speed is based upon actual measurement.
- ※ Specifications are subject to change without notice.