



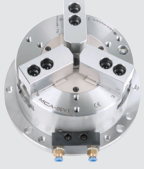
POWER CHUCK



RTC

Rotary Table Chuck

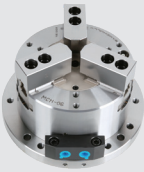
146 P



MCA

Stationary Pneumatic
Chuck

148 P



MCH

Stationary Hydraulic
Power Chuck

150 P

RTC Rotary Table Chuck



Advantage Features

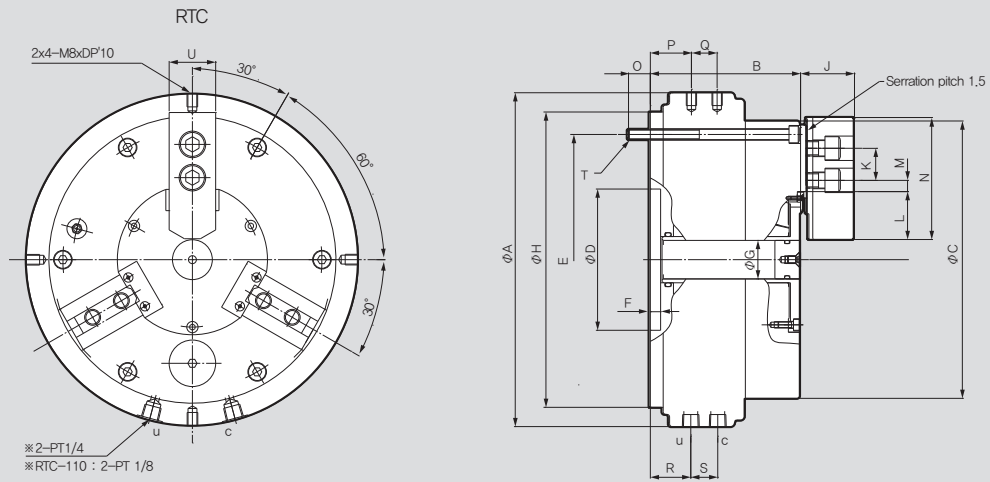
Ideal for 5 axis rotary tables where space for pancake cylinder is limited
 Suitable for robotic part loading/unloading
 Sealed design prevents coolant and chip contamination

Technical features

Built in cylinder allows for less space and easy operation

SPECIFICATIONS

	RTC-110	RTC-160	RTC-210	RTC-260
Thru Hole Dia. [mm]	8	20	30	43
Jaw Stroke Dia. [mm]	5.2	5.2	6.3	6.3
Plunger Stroke [mm]	11.3	11.5	13.7	13.6
Max. Static Gripping Force [kN(kgf)]	7.5	21	33	48
Max. Pneumatic Pressure [MPa(kgf/cm ²)]	0.7 (7)	0.7 (7)	0.7 (7)	0.7 (7)
Max. R.P.M. [min ⁻¹]	100	72	50	50
Weight (included Soft Jaws) [kg]	7.3	22	27.7	42.5



※ It is recommended to grease chucks at least twice a day in order to maximize longevity.

DIMENSIONS

	RTC-110	RTC-160	RTC-210	RTC-260
Φ A	145	210	260	304
B	92	102	117	125
Φ C	113	166	216	264
Φ D	80	80	110	140
E	98	148	195	234
F	6	7	8	8
Φ G	8	20	30	43
Φ H	124	175	230	268
J	27	36	42	46
K	14	20	25	30
L max.	32.8	41.9	53	66
L min.	30.2	39.3	49.85	62.85
M max.	5.4	9.25	14.75	16
M min.	2.4	4.75	8.75	8.5
N	55	72	95	110
O	11	15	17	16
P	25.5	31	32	39.5
Q	12.2	18	20	21
R	25.5	32.3	31.5	39.5
S	12.2	15.2	21	21
T	M6x95L	M8x105L	M8x125L	M10x130L
U	23	31	35	40

MCA Stationary Pneumatic Chuck



Advantage Features

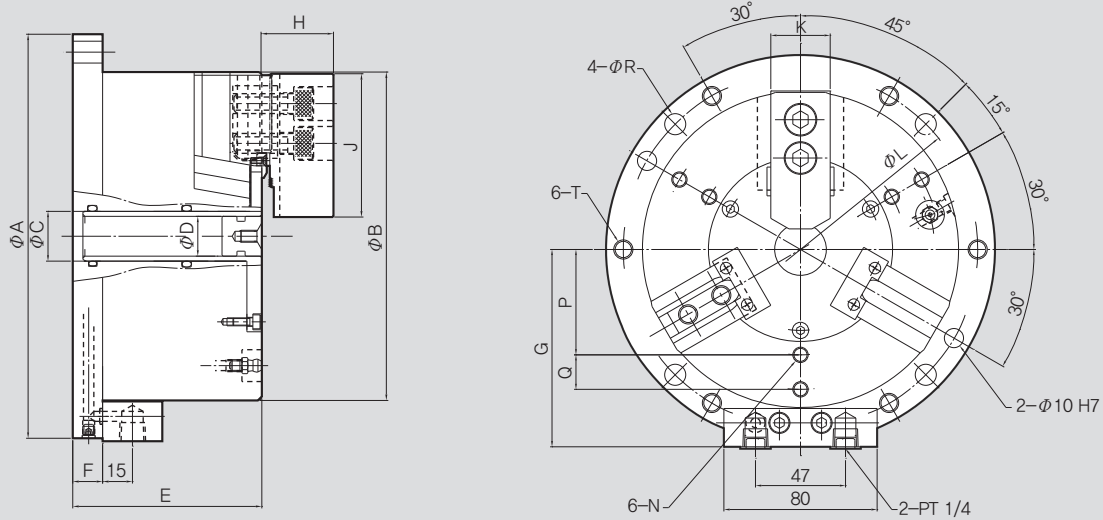
Allows for fast, accurate, and strong clamping of parts for machining center applications
 Ideal for robotic part tending operations (solenoid, air filter, and regulator sold separately)
 Operates with standard 0.7 MPa pressure
 Soft and Hard Jaw Options available

Technical features

Sealed against coolant and chips
 Built-in air cylinder with compact design

SPECIFICATIONS

	MCA-04	MCA-06	MCA-08	MCA-10
Clamping Force (Pneumatic 6bar) [kN(kgf)]	7.5(765)	21(2140)	33(3300)	48(4800)
Jaw Stroke Dia. [mm]	5.2	5.2	6.3	6.3
Grip Dia. Max [mm]	110	165	210	254
Grip Dia. Min [mm]	10	23	30	50
Max. Pneumatic Pressure [MPa(kgf/cm ²)]	0.7(7)	0.7(7)	0.7(7)	0.7(7)
Weight [kg]	7.3	16	28	43



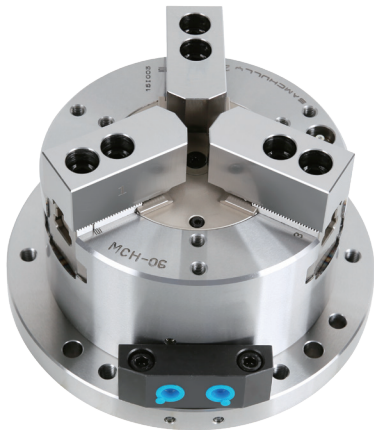
※ It is recommended to grease chucks at least twice a day in order to maximize longevity.
※ Pneumatic hand valve kit sold separately

DIMENSIONS

	MCA-04	MCA-06	MCA-08	MCA-10
ΦA	148	203	248	300
ΦB	110	165	210	254
ΦC	20	25	36	50
ΦD	-	20	30	43
E	90	95	106	110
F	15	15	15	16
G	75.5	103	125.5	147.5
H	27	36	42	46
J	55	72	95	110
K	23	31	35	40
N	M8	M8	M8	M10
ΦL(P.C.D)	130	185	230	280
P	-	55	68	80
Q	-	58	68	80
ΦR	9	11	11	13
T	M10	M10	M10	M12

MCH Stationary Hydraulic Power Chuck

Power chuck



Advantage Features

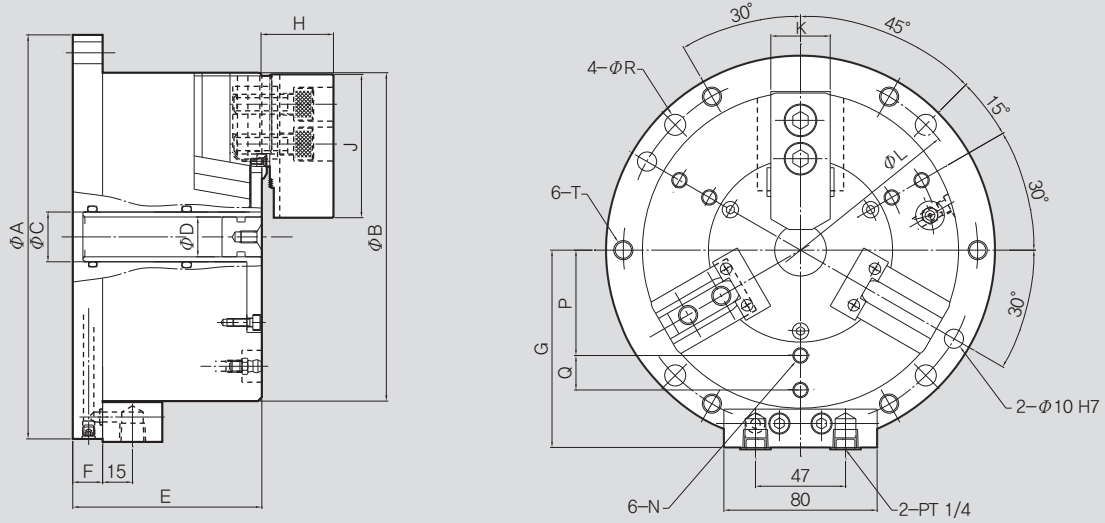
Allows for fast, accurate, and hydraulic clamping of parts for machining center applications
 Ideal for robotic part tending operations (solenoid, air filter, and regulator sold separately)
 Compatible with the Samchully 50AH-C air/hydraulic booster (p. 70) for pneumatic input, hydraulic clamping output
 Soft and Hard Jaw Options available

Technical features

Sealed against coolant and chips
 Built in cylinder allows for less space and easy operation

SPECIFICATIONS

	MCH-06	MCH-08	MCH-10
Clamping Force (25bar) [kN]	55	85	125
Jaw Stroke Dia. [mm]	5.2	6.3	6.8
Grip Dia. Max [mm]	169	210	254
Grip Dia. Min [mm]	15	30	50
Max. Pneumatic Pressure [MPa(kgf/cm ²)]	18	18	15
Weight [kg]	18	30	44



※ It is recommended to grease chucks at least twice a day in order to maximize longevity.

DIMENSIONS

	MCH-06	MCH-08	MCH-10
ΦA	210	255	300
ΦB	165	210	254
ΦC	25	36	50
ΦD	20	30	43
E	100	111	121
F	20	20	20
G	103	125.5	147.5
H	36	42	46
J	72	95	110
K	31	35	40
N	M8	M8	M10
ΦL (P.C.D.)	185	235	280
P	55	68	80
Q	18	25	35
ΦR	11	11	13
T	M10	M10	M12



SCROLL CHUCK



FSC

Standard Front-Mounting Scroll Chuck
(Solid Jaws)

154 P



SL

Standard Slotter Chuck
(Hard Jaws)

155 P



FTC

Front-Mounting Scroll Chuck
(Soft and Hard top Jaws)

156 P

FSC Standard Front-Mounting Scroll Chuck (Solid Jaws)

Thru Hole Range: $\varnothing 34 \sim \varnothing 100$
Clamping Range: $\varnothing 3 \sim \varnothing 300$

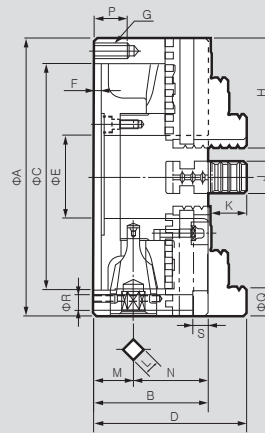
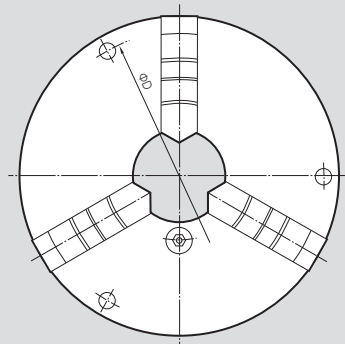


Advantage Features

Scroll chuck with hardened jaws (Front mounting)

Technical features

Includes external and internal gripping jaws.



※ It is recommended to grease chucks at least twice a day in order to maximize longevity.

SPECIFICATIONS

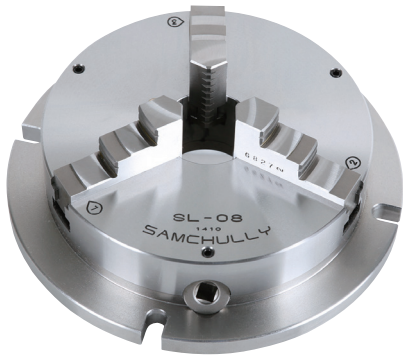
	FSC-165(6")	FSC-190(7")	FSC-230(9")	FSC-273(10")	FSC-310(12")
Max. Static Gripping Force [kgf]	31(3161)	31(3161)	37(3773)	46(4691)	55(5608)
External [φmm]	3~160	4-180	5-220	5-260	10-300
Internal [φmm]	48~150	56-170	62-210	70-250	86-290
Handle Torque [N·m(kgf·m)]	88.3(9.0)	107.9(11.0)	147(15.0)	176.5(18.0)	206(21.0)
Max. r.p.m. [min ⁻¹]	4000	3500	2900	2500	2200
Weight [kg]	11.4	12.2	21.2	28	41
GD ² [N·m ² (kgf·m ²)]	1.18(0.12)	2.35(0.24)	6.27(0.64)	9.90(1.01)	23.0(2.35)

DIMENSIONS

	FSC-165(6")	FSC-190(7")	FSC-230(9")	FSC-273(10")	FSC-310(12")
ΦA	167	192	232	273	310
B	65	75	84	86	96
ΦC(H6)	130	155	190	230	260
ΦD	147	172	210	250	285
ΦE	45	57	75	89	100
F	5	5	6	6	7
G	3-M10	3-M10	3-M12	3-M12	3-M12
H	65	75	87	98	110
J	19	22	24	28	30
K	25.07	30.06	35.04	40.02	45.08
L	10	11	12	12	14
M	24	27.5	29.5	31.5	31.5
N	41	47.5	54.5	54.5	64.5
P	20	20	25	25	25
Mounting Bolt	Q	17.5	17.5	20	20
	R	11	11	14	14
	S	10.5			

SL Standard Slotter Chuck (Hard Jaws)

Thru Hole Range : $\varnothing 60 \sim \varnothing 100$
Clamping Range : $\varnothing 4 \sim \varnothing 266$

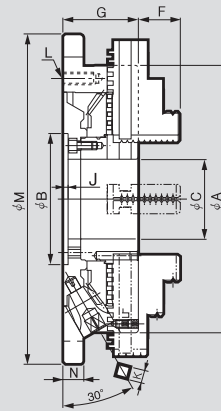
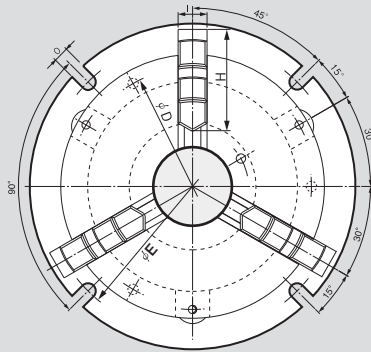


Advantage Features

Low-profile and compact
Ideal for machining centers

Technical features

Angled t-handle slot
One-piece, reversible hard jaws



DIMENSIONS

	SL-08	SL-10	SL-12
$\varnothing A$	215	255	305
$\varnothing B(HC6)$	110	125	160
$\varnothing C$	60	76	100
$\varnothing D$	190.5	230	280
$\varnothing E$	240	286	340
F	35.04	40.02	45.05
G	64	72	76
H	85	98	110
I	25	28	30
J	4	4.5	5
K	11	12	14
L	M10	M12	M12
M	266	315	370
N	17	20	22
O	13	15	17

SPECIFICATIONS

	SL-08	SL-10	SL-12
Max. Static Gripping Force [kN(kgf)]	37(3,800)	46(4,700)	55(5,620)
Clamping Range External [\varnothing mm]	4~182	4~220	5~266
Clamping Range Internal [\varnothing mm]	58~174	68~212	80~263
Handle Torque [N·m(kgf·m)]	117.7(13)	176.5(18)	196.2(20)
Weight [kg]	17.6	27.7	40

FTC Front-Mounting Scroll Chuck (Soft and Hard top Jaws)



Advantage Features

Front mounting scroll chuck with two-piece jaws.

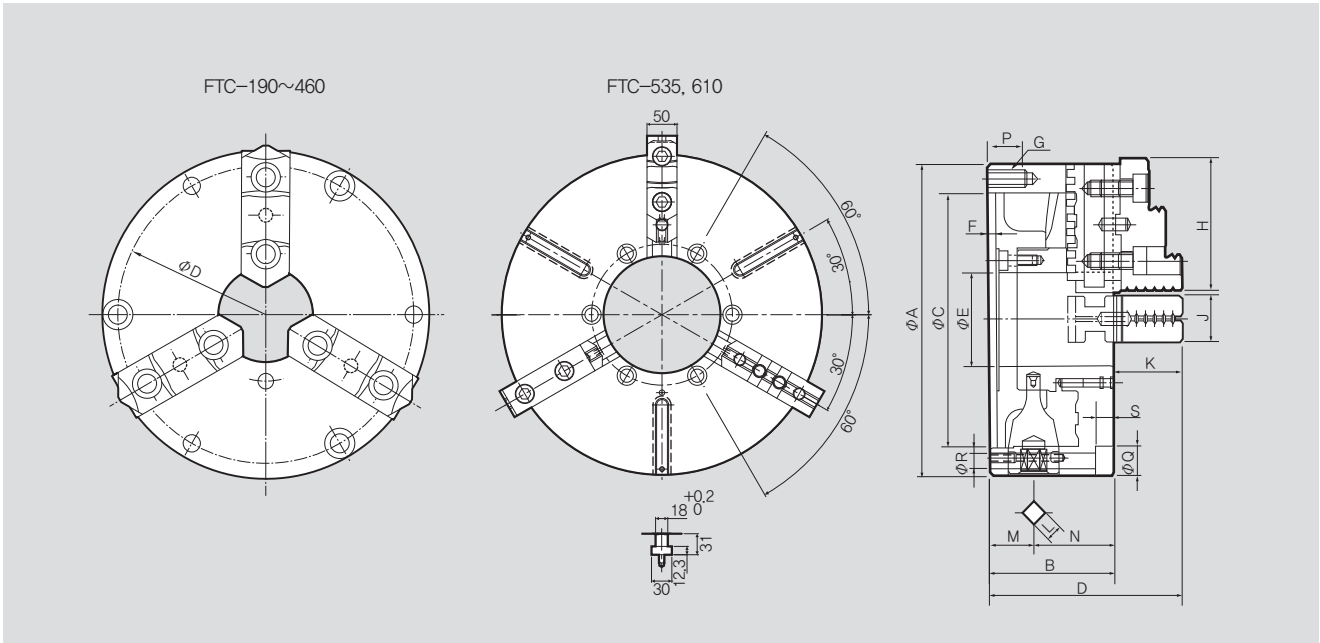
Technical features

Reversible hard jaws.

SPECIFICATIONS

	FTC-190(7")	FTC-230(9")	FTC-273(10")	FTC-310(12")
Max. Static Gripping Force [kgf]	31(3161)	37(3773)	46(4691)	55(5608)
External [φmm]	4~180	5~220	5~260	10~300
Internal [φmm]	56~170	62~210	70~250	86~290
Handle Torque [N·m(kgf·m)]	107.9(11.0)	147(15.0)	176.5(18.0)	206(21.0)
Max. r.p.m. [min ⁻¹]	3500	2900	2500	2200
Weight [kg]	12.2	21.2	28	41
GD ² [N·m ² (kgf·m ²)]	2.35(0.24)	6.27(0.64)	9.90(1.01)	23.0(2.35)

	FTC-460(18")	FTC-535(21")	FTC-610B(24")	FTC-610HA(24")
Max. Static Gripping Force [kgf]	65(6650)	73(7400)	80(8200)	80(8200)
External [φmm]	40~410	45~481	50~576	130~576
Internal [φmm]	152~436	155~499	235~592	235~592
Handle Torque [N·m(kgf·m)]	255.0(26)	313.9(32)	372.7(38)	372.7(38)
Max. r.p.m. [min ⁻¹]	1200	950	850	850
Weight [kg]	106	182	238	238
GD ² [N·m ² (kgf·m ²)]	124(12.6)	287(29.3)	488(49.8)	488(49.8)



※ It is recommended to grease chucks at least twice a day in order to maximize longevity.

DIMENSIONS

	FTC-190(7")	FTC-230(9")	FTC-273(10")	FTC-310(12")	FTC-460(18")	FTC-535(21")	FTC-610B(24")
$\varnothing A$	192	232	273	310	460	535	610
B	78.7	83.7	88	96	114	143	143
$\varnothing C(H6)$	155	190	230	260	400	270	380
$\varnothing D$	172	210	250	285	425	235	315
$\varnothing E$	57	75	89	100	190	195	275
F	5	6	6	7	8	12	14
G	3-M10	3-M12	3-M12	3-M12	-	-	-
H	80.5	90.5	103.5	115.5	140(130)	150(130)	130
J	28	32	35	40	50	50	50
K	42.8	53.8	57.82	56.08	80	82	82
L	11	12	12	14	17	22	22
M	27.5	29.5	31.5	31.5	38.2	57.5	57.5
N	51.2	54.2	56.5	64.5	76	85.5	85.5
P	20	25	25	25	-	-	-
Mounting Bolt	Q	16.5	20	20	26	32	32
	R	10.5	13	13	13	18	22
	S	10.5	12.5	12.5	12.5	18	22
	Bolt	M10	M12	M12	M12	6-M16X125	6-M20X140