



ACCESSORIES



Soft Jaw

Power Chuck Soft Jaw

160 P



Etc.

Scroll Chuck
Accessories

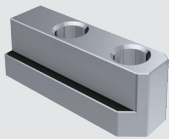
174 P



Hard Jaw

Power Chuck Hard Jaw

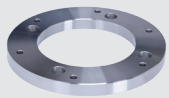
162 P



T-Nut

Power Chuck T-Nut

164 P



Adaptor

Power Chuck
Adaptor Plates

166 P



QJC Jaw

Quick Jaw Change
Chuck Jaws

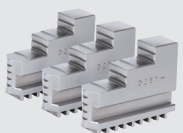
168 P



TC, FTC Jaw

Scroll Chuck Jaws

170 P



SC, IC Jaw

Scroll Chuck Jaws

171 P



FTU Jaw

Scroll Chuck Jaws

172 P

Soft Jaw Power Chuck Soft Jaw



Application
Works with HC.

Fig. 1

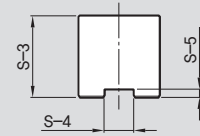
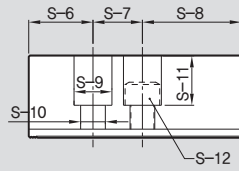
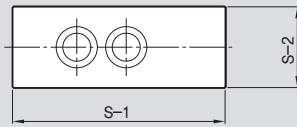


Fig. 2

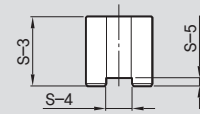
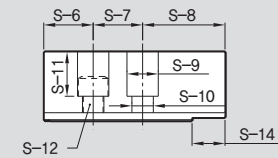
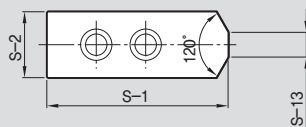


Fig. 3

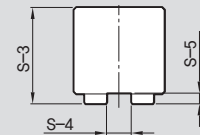
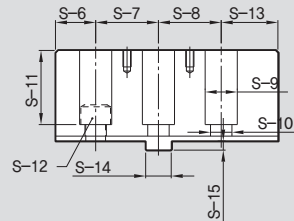
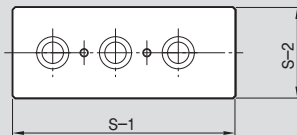


Fig. 4

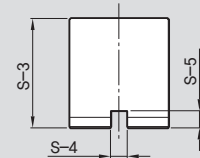
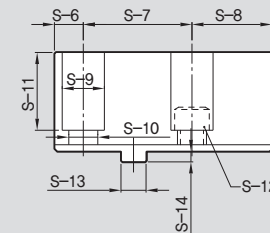
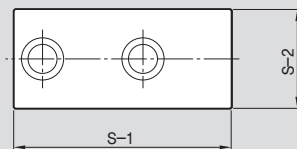
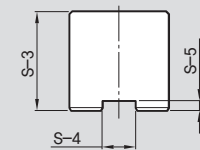
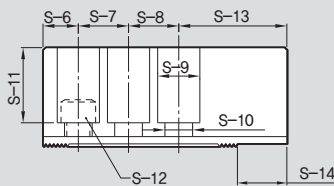
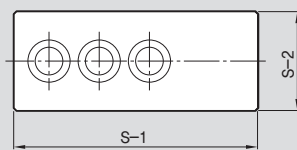


Fig. 5



※ See the product dimension Table on the right.
※ Please inquire separately for the special Jaw.

DIMENSIONS

	SB04C1	SB05N1	SB05B1	SB06B1	SB08B1	SB10B1	SB12A1	SB12N1	SB15C1
Fig.	2	2	2	2	2	2	1	1	1
Serration Pitch	1.5x60°	1.5x60°	1.5x60°	1.5x60°	1.5x60°	1.5x60°	1.5x60°	1.5x60°	1.5x60°
S-1	48	54	62	72	95	110	129	111	165
S-2	19	23	23	31	35	40	49	49	50
S-3	23	25	27	32	37.5	42	49.5	49.5	66
S-4	8	10	10	12	14	16	18	21	22
S-5	3	4	4	5	5	5	5	4	8
S-6	8	12	14	15	24	30	39	21	37
S-7	15	14	19	20	25	30	30	30	43
S-8	25	28	29	37	46	50	60	60	85
S-9	11	13.5	13.5	17	19	19	23	25	32
S-10	6.6	8.5	8.5	11	13	13	15	17	21
S-11	15	16.5	18	20	23	27	30	32.5	42
S-12	M6x16	M8x20	M8x20	M10x30	M12x35	M12x35	M14x45	M16x40	M20x60
S-13	6	5	12	5	12	15	-	-	-
S-14	-	-	14	15	20	20	-	-	-
S-15	-	-	-	-	-	-	-	-	-
Corresponding	HCH-04	HC-04, HS-05, MCA-04	HC-05	HS/HCH/HC-06, MH-206, UR-175	HCH/HC/HS-08, MH-208, UR-210	HCH/HC/HS-10, MH-210, UR-250	HC/HCH-12	HS-12, MH-212, UR-315	HCH-15, HCH-18

	SB15N1	SB15A2	SB18A2	SB32B2	SB32GB	SB32SB2	SB40GB	SB40SB2
Fig.	1	1	1	1	4	5	3	5
Serration Pitch	1.5x60°	3.0x60°	3.0x60°	3.0x60°	-	3.0x60°	-	3.0x60°
S-1	135	165	180	160	165	185	270	270
S-2	50	62	65	75	75	75	110	110
S-3	59	66	69	75	82	75	117	110
S-4	25.5	22	25	25.5	12.7	25.5	30	30
S-5	5	8	9	7	13	7.5	13	7.5
S-6	26	30	40	25	21.9	26.8	48.8	32.5
S-7	43	50	60	38	76.2	38.1	76.2	60
S-8	66	85	80	97	66.9	38.1	76.2	60
S-9	36	32	32	32	32	32	39	39
S-10	21	21	21	22	22	21	26	26
S-11	38	42	45	54	59	57	90	90
S-12	M20x55	M20x60	M20x60	M20	M20	M20	M24	M24
S-13	-	-	-	-	19.025	82	68.8	117.5
S-14	-	-	-	-	7	-	19.025	85
S-15	-	-	-	-	-	-	7	-
Corresponding	HC-15, HC-18	MH-218	HC/HCH-21, HC/HCH-24, MH-221,224	HCH-32 [Serration]	HC-32 [Groove]	HC-32 [Serration]	HC-40,50,55,63,70,80 [Groove]	HC-40,50,55,63,70,80 [Serration]

Hard Jaw Power Chuck Hard Jaw



Application
Works with HC.

Fig. 1

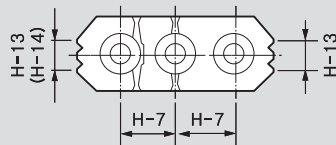


Fig. 2

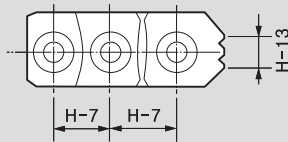


Fig. 3

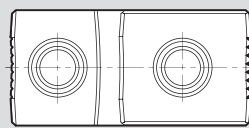
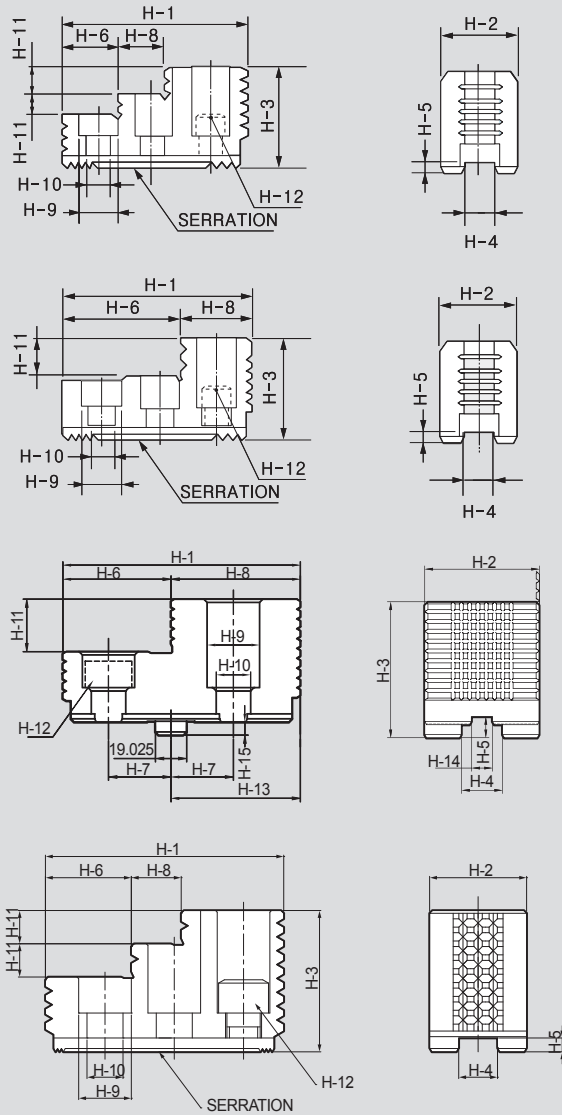
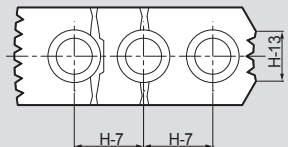


Fig. 4



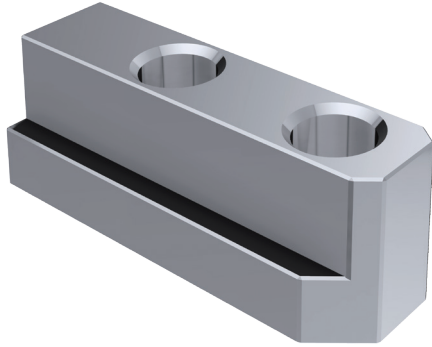
※ See the product dimension Table on the right.

DIMENSIONS

	HB04N1	HB06A1	HB08A1	HB10A1	HB12B1	HB12N1	HB15A1	HB15A2
Fig.	2	4	1	1	2	2	1	1
Serration Pitch	1.5x60°	1.5x60°	1.5x60°	1.5x60°	1.5x60°	1.5x60°	1.5x60°	3.0x60°
H-1	53	67	86	99.5	97.5	103	149	149
H-2	23	31	35	40	50	50	62	62
H-3	27.5	41	51	54	55	52	86	86
H-4	10	12	14	16	18	21	22	22
H-5	4	5	5	5	5	4	9	9
H-6	30.5	18	31	43	64.5	62.5	63	63
H-7	14	20	25	30	30	30	43	50
H-8	22.5	17	18	17	33	40.5	34	34
H-9	13.5	17	19	19	22	25	32	32
H-10	8.5	11	13	13	15	17	21	21
H-11	10	9	12	13	20	17	20	20
H-12	M8	M10	M12	M12	M14	M16	M20	M20
H-13	6	10	12	15	18	30	40	40
H-14	-	-	12	15	-	-	40	40
H-15	-	-	-	-	-	-	-	-
Corresponding	HS-04, HS-05	"HC/HS-06 MH-206, UR-175"	HC/HCH/HS-08, MH-208, UR-210	HC/HCH/HS-10, MH-210, UR-250	HC/HCH-12	HS-12, MH-212 UR-315	HCH-15, HCH-18	MH-218

	HB15N1	HB18B2	HB32B2	HB32GB	HB32SB2	HB40GB	HB40SB2	-
Fig.	1	2	2	3	2	3	2	-
Serration Pitch	1.5x60°	3.0x60°	3.0x60°	-	3.0x60°	-	3.0x60°	-
H-1	149	159.5	150	150	168	223	223	-
H-2	62	80	70	70	70	80	80	-
H-3	86	90	75	83	75	124	117	-
H-4	25.5	25	25.5	25	25.5	30	30	-
H-5	5	9	7	13	7.5	15	8	-
H-6	69	104.5	66	66	89	133	133	-
H-7	43	50	76.2	38.1	38.1	38.1	114.3	-
H-8	27	55	79	79	79	90	90	-
H-9	32	32	32	32	32	39	39	-
H-10	21	21	21	21	21	26	26	-
H-11	20	40	32	32	32	55	55	-
H-12	M20	M20	M20	M20	M20	M24	M24	-
H-13	43	55	-	79	-	83	-	-
H-14	38	-	-	12.7	-	-	-	-
H-15	-	-	-	8	-	7	-	-
Corresponding	HC-15, HC-18	HC/HCH-21, HC/HCH-24, MH-221,224	HCH-32 [Serration]	HC-32 [Groove]	HC-32 [Serration]	HC-40[Groove] 50,55,63,70,80	HC-40[Serration] 50,55,63,70,80	-

T-NUT Power Chuck T-Nuts



Application
Works with HC.

Fig. 1

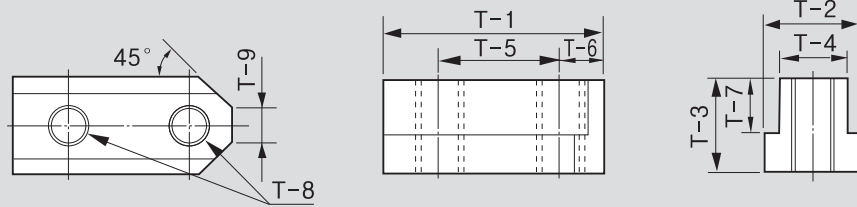


Fig. 2

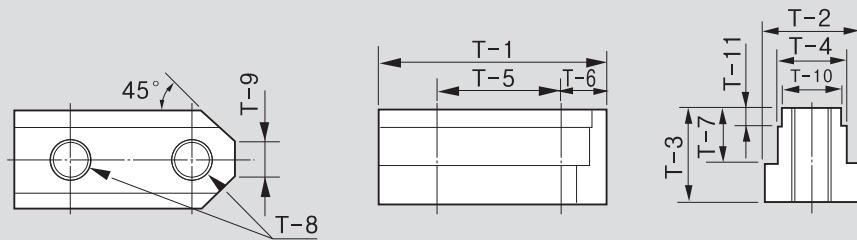
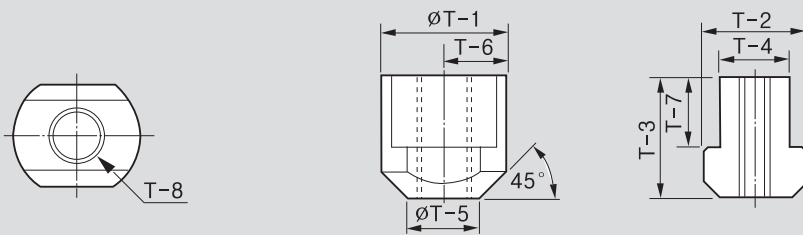


Fig. 3



※ See the product dimension Table on the right.

DIMENSIONS

	TN-HCH-04	TN-HS-04, TN-HS-05	TN-HC-04	TN-HC-05	TN-HS-06	TN-HCH, TN-HC-06	TN-HS-08	TN-HCH, TN-HC-08	TN-HS-10	TN-HCH, TN-HC-10
Fig.	1	1	1	1	1	1	1	1	1	1
T-1	24.5	26	28	32	36	36.5	46.5	48	51	55
T-2	11.5	15	15	15	17.5	17.5	20.5	20.5	22.5	22.5
T-3	13.5	15	18	18	18.5	22.5	20.5	25.5	21.5	25.5
T-4	8	10	10	10	12	12	14	14	16	16
T-5	15	14	14	19	20	20	25	25	30	30
T-6	4.5	6	7	6	8.25	7.5	10.5	11	11	11
T-7	9	9.5	12.5	12.5	11	15	12	16	13	16
T-8	M6	M8	M8	M8	M10	M10	M12	M12	M12	M12
T-9	5	5	5	6	8	6	12	8	11	8
T-10	-	-	-	-	-	-	-	-	-	-
T-11	-	-	-	-	-	-	-	-	-	-
Corresponding	HCH Type of 4" Chuck	HS Type of 4", 5" Chuck	HC Type of 4" Chuck	HC Type of 5" Chuck	HS/MH/UR Type of 6" Chuck	HCH/HC Type of 6" Chuck	HS/MH/UR Type of 8" Chuck	HCH/HC Type of 8" Chuck	HS/MH/UR Type of 10" Chuck	HCH/HC Type of 10" Chuck

	TN-HS-12	TN-HCH, TN-HC-12	TN-HCH-15, TN-HCH-18	TN-HC-15, TN-HC-18	TN-MH-218	TN-HCH-21, TN-HCH-24	TNX-HC-21, TNX-HC-24	TN-HCH-32	TN-HC-32	TN-HC-40
Fig.	1	1	2	1	2	3	3	3	3	3
T-1	55.5	55.5	80	80	80	100	46	35	37	42
T-2	29.5	26.5	33.5	35	33.5	37.5	37.5	35	37.5	42.5
T-3	27.75	33.5	45.5	39	45.5	45	45	39.5	47.5	49.5
T-4	21	18	24	25.5	24	25	25	25.5	25.5	30
T-5	30	30	43	43	50	60	26.5	25	-	-
T-6	12	11.5	17	17	17	20	23	-	-	-
T-7	16.25	20	29	20	29	26	26	20.5	28.5	30.5
T-8	M16	M14	M20	M20	M20	M20	M20	M20	M20	M24
T-9	13	12	11	11	16	11	-	-	-	-
T-10	-	-	22	-	-	22	-	-	-	.
T-11	-	-	7.5	-	-	7.5	-	-	-	.
Corresponding	HS/MH Type of 12" Chuck	HCH/HC Type of 12" Chuck	HCH Type of 15", 18" Chuck	HC Type of 5", 18" Chuck	MH-218	HCH/HCHF- 21,24(S), MH-221(S)	HC/HCF-21,24 HCH/HCHF- 21,24(H), MH-221(H)	HCH-32	HC-32	HC-40

※ TNX-HC-21-24, TNX-HC-32 require two T-nuts per Jaw.

※ TNX-HC-40 require three T-nuts per Jaw.

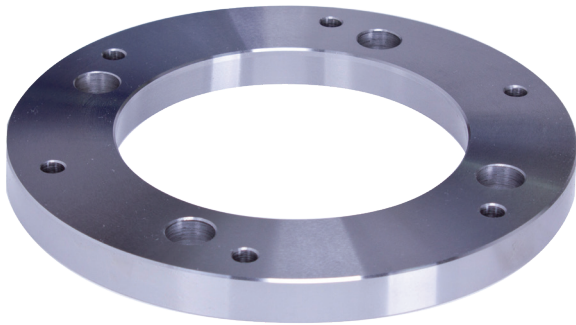


Important for maintenance and safe operation.

- Maximum extreme-pressure protection
- Exceptional adhesion & cohesion characteristics
- Superior friction-reduction properties-protects against friction-related heat & wear
- Excellent resistance to water washout & spray off
- Reduces maintenance & downtime
- Reduces operating temperatures
- Extends equipment life.

Adaptor Plates

Power Chuck Adaptor Plates



Application
Works with HC.

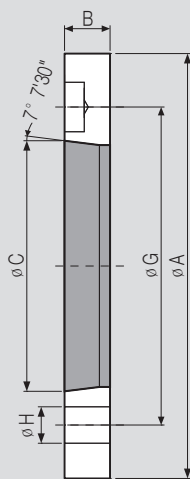


Fig. 1 : Direct Type

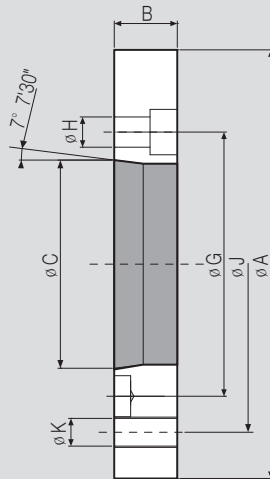


Fig. 2 : Indirect Type

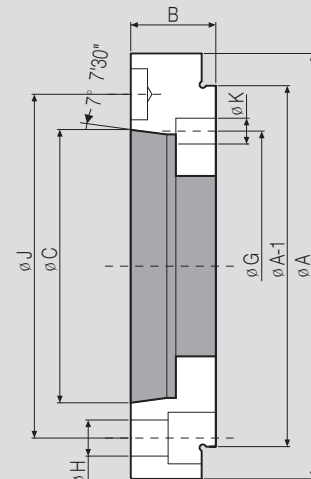


Fig. 3 : Plate Type

※ See the product dimension Table on the right.

DIMENSIONS

	Fig.	Spindle Nose	A	B	C	G	H	Corresponding	
AP06A05	1	A2-5	140	15	82.563	104.78	12	HS/HSL/HCH/HC/HCL-06, MH-206, UR-175	
APT06A05	1	A2-5	140	15	82.563	104.78	12	HST/HCT/HCLT-06, MHT-206	
AP08A06	1	A2-6	170	17	106.375	133.35	13.5	HS/HSL/HCH/HC/HCL-08, MH-208, UR-210	
APT08A06	1	A2-6	170	17	106.375	133.35	13.5	HST/HCT/HCLT-08, MHT-208	
APF08A06	1	A2-6	170	17	106.375	133.35	13.5	HSF/HCF/HCLF-08, MHF-208	
AP10/12A08	1	A2-8	220	18	139.719	171.45	18	HS/HSL/HCH/HC/HCL-10,12, MH-210, UR-250	
APT10/12A08	1	A2-8	220	18	139.719	171.45	17	HST/HCT/HCLT-10,12	
APF10/12A08	1	A2-8	220	18	139.719	171.45	18	HSF-10,12, HCF/HCLF-12	
AP212A08	1	A2-8	300	22	139.719	235	21	MH-212, UR-315	
AP212A11	1	A2-11	300	22	196.87	235	21	MH-212	
AP15A11	1	A2-11	300	22	196.87	235	21	HCH-15, HC-15,18	
APT15A11	1	A2-11	300	22	196.87	235	21	HCHT-15	
APF15A11	1	A2-11	300	22	196.87	235	21	HCHF-15, HCF-15,18	
AP18A11	1	A2-11	380	22	196.87	235	21	HCH-18	
APF18A11	1	A2-11	380	22	196.87	235	21	HCHF-18	
AP21/24A15	1	A2-15	380	27	285.775	330.2	24	HCH/HC-21,24, MH-221,224	

	Fig.	Spindle Nose	A	B	C	G	H	J	K	Corresponding
AP08A05	2	A2-5	170	25	82.563	104.78	12	133.35	M12	HS/ HST/ HSF/ HSL/ HCH/ HC/ HCT/ HCF/ HCL/ HCLT/ HCLF-08, MH/ MHT/ MHF-208
AP10/12A06	2	A2-6	220	25	106.375	133.35	13.5	171.45	M16	HS/ HST/ HSF/ HSL/ HCH/ HC/ HCT/ HCL/ HCLT-10,12, MH-210, HCF/ HCLF-12
AP15A08	2	A2-8	300	33	139.719	171.45	18	235	M20	HCH/ HCHT/ HCHF-15, HC/HCF-15,18
AP218A15	2	A2-15	380	60	285.775	330.2	24	300	M20	MH-218
AP21/24A11	2	A2-11	380	27	196.87	235	21	330.2	M22	HCH/ HC-21,24,MH-221,224
AP21/24A11	2	A2-11	380	42	196.87	235	22	330.2	M22	HCH/ HCHF/ HC/ HCF-21,24, MH-221,224
AP21/24A11	2	A2-11	380	42	196.87	235	22	330.2	M24	HC/HCF-32, HCH/HCHF/HC-21N,24N
AP21/24A15	2	A2-15	380	42	285.775	330.2	24	330.2	M22	HCH/ HC-21,24, MH-221,224
AP32A15	2	A2-15	380	42	285.775	330.2	26	330.2	M24	HC-32
AP32/40A11	2	A2-11	520	50	196.87	235	22	463.6	M24	HCH-32, HC-40, HC-50
AP32/40A15	2	A2-15	520	42	285.775	330.2	26	463.6	M24	HCH-32, HC-40, HC-50

	Fig.	Spindle Nose	A	A-1	B	C	G	H	J	K	Corresponding
AP06A06	3	A2-6	165	140	33	106.375	133.35	14	104.78	M10	HS/ HSL/ HCH/ HC/ HCL-06, MH-206
AP08A08	3	A2-8	210	170	30	139.719	171.45	18	133.35	M12	HS/ HST/ HSF/ HSL/ HCH/ HC/ HCT/ HCF/ HCL/ HCLT/ HCLF-08, MH/ MHT/ MHF-208

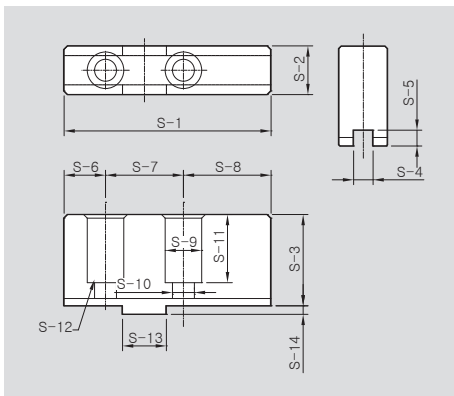
QJC-Jaw Quick Jaw Change Chuck Jaws



Soft Top Jaws

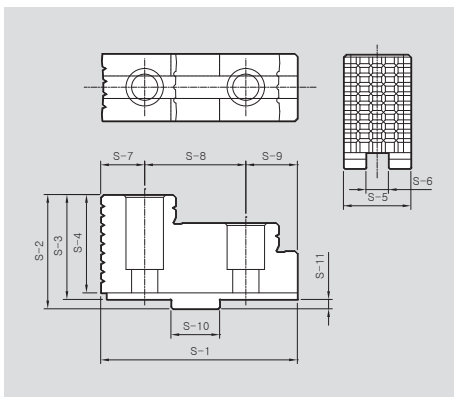


Hard Top Jaws



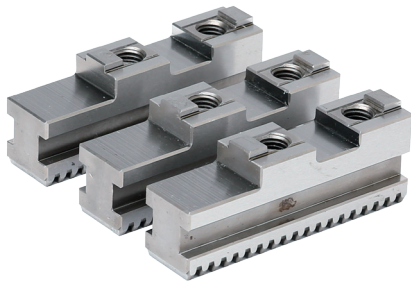
SOFT TOP JAWS DIMENSIONS

	QSB206	QSB208	QSB210	QSB215
S-1	85	105	125	145
S-2	20	22	30	35
S-3	37.5	40	50	50
S-4	8	10	12	12
S-5	6.5	8.5	8.5	8.5
S-6	17	25	25	31
S-7	32	40	40	54
S-8	36	40	60	60
S-9	15	15	20	20
S-10	9	9	14	14
S-11	28	31	39	34
S-12	M8x20	M8x20	M12x30	M12x40
S-13	18	20	20	26
S-14	3.5	5	5	5
Corresponding	QJC-206	QJC-208	QJC-210,QJC-212	QJC-215



HARD TOP JAWS DIMENSIONS

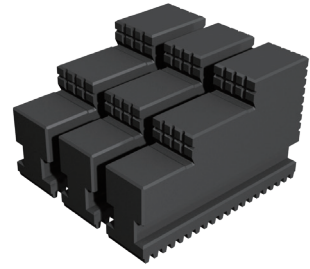
	QHB206	QHB208	QHB210	QHB215
S-1	63	72	90	105
S-2	36	43	55	61
S-3	32.5	38	50	56
S-4	29.5	34.5	46.5	52.5
S-5	20	22	30	36
S-6	8	10	12	12
S-7	17	15	21	23.5
S-8	32	40	40	54
S-9	14	17	29	27.5
S-10	18	20	20	26
S-11	3.5	5	5	5
Corresponding	QJC-206	QJC-208	QJC-210,QJC-212	QJC-215



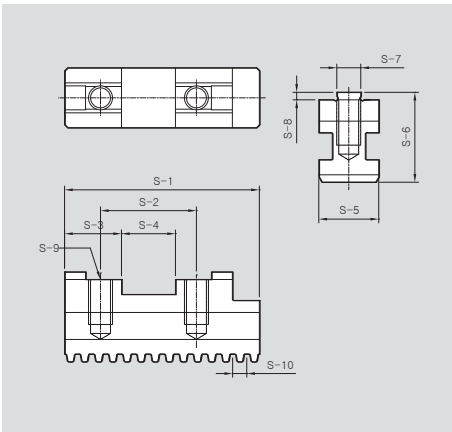
Base Jaws



Solid Soft Jaws

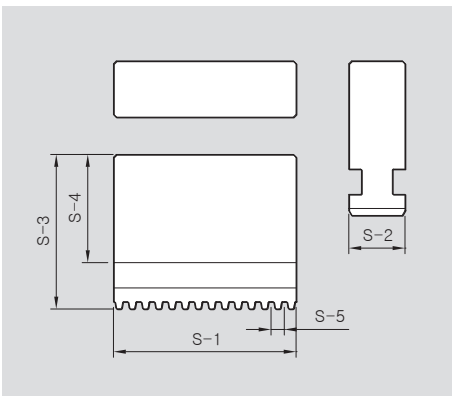


Solid Hard Jaws



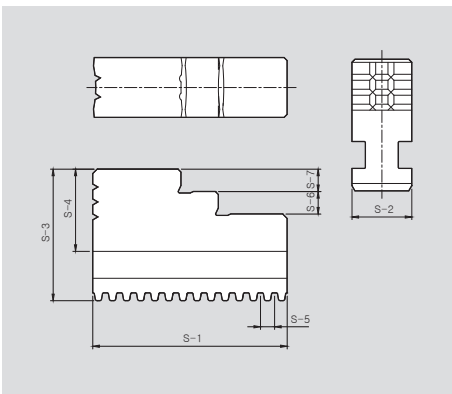
BASE JAWS DIMENSIONS

	QBJ206	QBJ208	QBJ210	QBJ212	QBJ215
S-1	65	85	104	115	125
S-2	32	40	40	40	54
S-3	19	23	26	26	30
S-4	18	20	20	20	26
S-5	20	22	26	32	32
S-6	30	32	40	45	45
S-7	8	10	12	12	12
S-8	2.5	2	3	3	3
S-9	M8	M8	M12	M12	M12
S-10	4.712	4.712	5.498	5.498	5.498
Corresponding	QJC-206	QJC-208	QJC-210	QJC-212	QJC-215



SOLID SOFT JAWS DIMENSIONS

	MQSB206	MQSB208	MQSB210	MQSB212	MQSB215
S-1	65	85	104	115	125
S-2	20	22	26	32	32
S-3	55	65	84	90	100
S-4	38.5	48	63	64	74
S-5	4.712	4.712	5.498	5.498	5.498
Corresponding	QJC-206	QJC-208	QJC-210	QJC-212	QJC-215



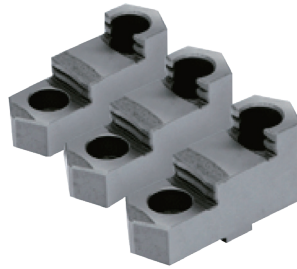
SOLID HARD JAWS DIMENSIONS

	MQHB206	MQHB208	MQHB210	MQHB212	MQHB215
S-1	65	85	104	115	125
S-2	20	22	26	32	32
S-3	55	65	84	90	100
S-4	38.5	48	63	64	74
S-5	4.712	4.712	5.498	5.498	5.498
S-6	7.5	10	14	14	45
S-7	7.5	10	14	14	15
Corresponding	QJC-206	QJC-208	QJC-210	QJC-212	QJC-215

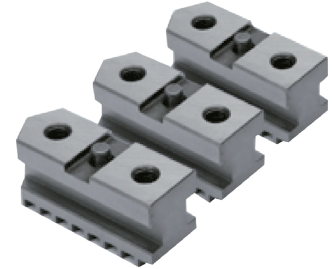
TC, FTC-Jaw Scroll Chuck Jaws



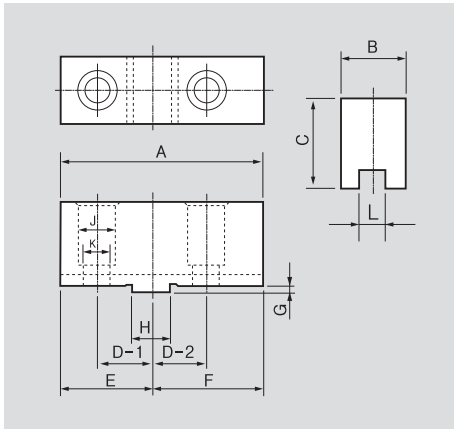
TC / FTC Soft Jaws



TC / FTC Hard Jaws

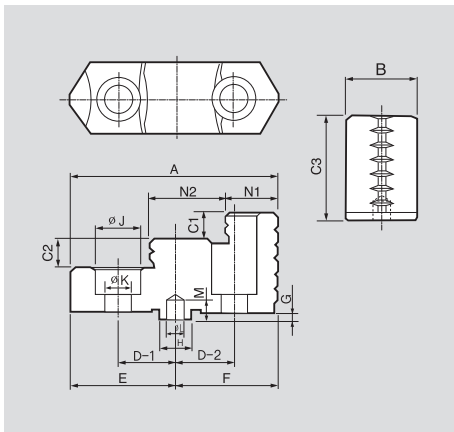


TC / FTC Base Jaws



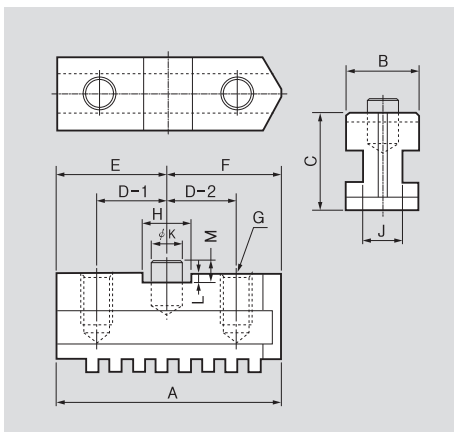
TC/FTC SOFT JAWS DIMENSIONS

	TC-190	TC-230	TC-273	TC-310	FTC-460	FTC-535	FTC-610
A	88	100	110	125	140	150	150
B	32	32	35	40	50	50	50
C	41	44	48.5	49.5	71.5	76.5	76.5
D-1	22.225	26.99	26.99	31.75	38.1	38.1	38.1
D-2	22.225	26.99	26.99	31.75	38.1	38.1	38.1
E	40	45	51	58	63.5	67.5	67.5
F	48	55	59	67	76.5	82.5	82.5
G	3	3	3	3	5.8	6	6
H	12.68	19.03	19.03	19.03	19.03	19.03	19.03
J	17	19	19	19	32	32	32
K	11	12.7	12.7	12.7	22	22	22
L	7.94	12.7	12.7	12.7	12.7	12.7	12.7
M	7	7	7	7	-	-	-



TC/FTC HARD JAWS DIMENSIONS

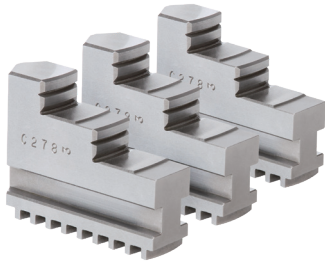
	TC-190	TC-230	TC-273	TC-310	FTC-460	FTC-535	FTC-610
A	80.5	90.5	103.5	115.5	130	130	130
B	28	32	35	40	50	50	50
C1	10	12	14	15	17	17	17
C2	10	12	14	15	17	17	17
C3	41	48	52	54	76.8	76.8	76.8
D1	22.225	26.99	26.99	31.75	38.1	38.1	38.1
D2	22.225	26.99	26.99	31.75	38.1	38.1	38.1
E	40.5	45.5	52	58	63.5	63.5	63.5
F	40	45	51.5	57.5	66.5	66.5	66.5
G	3	3	3	3	5.8	5.8	5.8
H	12.68	19.03	19.03	19.03	19.025	19.025	19.025
ΦJ	17	19	19	19	32	32	32
ΦK	11	13	13	13	22	22	22
ΦL	7.9	12.7	12.7	12.7	-	-	-
N1	21.5	23.5	31.5	30.5	52	52	52
N2	29	33	34	40	35	35	35



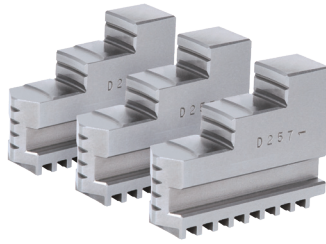
TC/FTC BASE JAWS DIMENSIONS

	TC-190	TC-230	TC-273	TC-310	FTC-460	FTC-535	FTC-610
A	75	87	98	111	165	177	205
B	28	28	28	32	45	50	50
C	34	38	40	42.5	54	60	60
D-1	22.225	26.99	26.99	31.75	38.1	38.1	38.1
D-2	22.225	26.99	26.99	31.75	38.1	38.1	38.1
E	35.5	42.5	47	54	-	-	-
F	39.5	44.5	51	57	66.5	66.5	66.5
G	2-M10	2-M12	2-M12	2-M12	4-M20	4-M20	5-M20
H	12.68	19.03	19.03	19.03	2-19.025	2-19.025	2-19.025
J	15	15	15	17.2	27	30	30
K	7.95	12.7	12.7	12.7	-	-	-
L	3.5	3.5	3.5	3.5	-	-	-
M	6.5	6.5	6.5	6.5	9.3	9.3	9.3

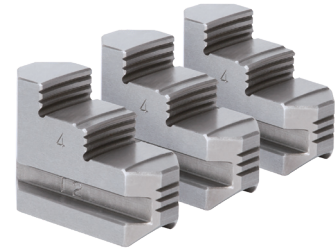
SC, IC-Jaw Scroll Chuck Jaws



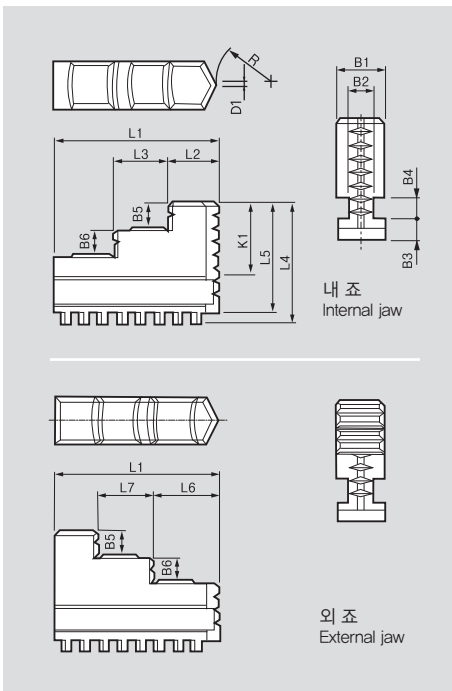
SC Jaws(Internal)



SC Jaws(External)

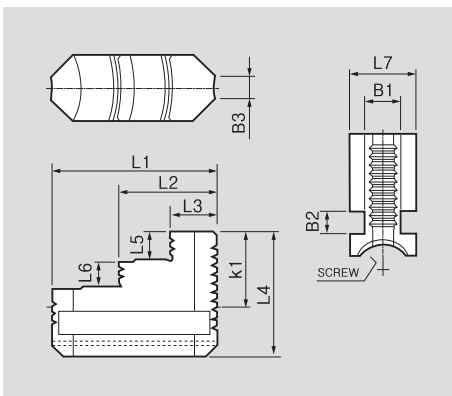


IC Jaws



SC JAWS DIMENSIONS

	SC-85	SC-110	SC-130	SC-165	SC-190	SC-230	SC-273	SC-310	SC-355	SC-405
L1	35	42	50	65	75	85	98	110	133	133
L2	11	13	15	20	23	26	30	35	44	44
L3	10	13	15	22	25	28	33	35	42	42
L4	29	34.5	40	46.5	55.5	64.5	69.5	82.5	101	101
L5	26.5	31	36	42	50.5	59.5	64	76	94.5	94.5
L6	16	19	21	27	30	33	38	43	53	53
L7	10	13	15	22	25	28	33	35	42	42
B1	11	14	16	19	22	24	28	30	35	35
B2	5.7	7.5	7.2	9.2	11.2	13.2	15	15	19	19
B3	4.7	6.2	7.7	8.2	9.7	11.2	11.2	13.4	14	14
B4	6.55	6.55	8.2	8.13	9.74	11.38	11.38	16.12	16.2	16.2
B5	6	7	8	10	12	14	15	16	21	21
B6	6	4.3	7.4	10	12	14	15	16	22	22
K1	17.75	21.05	23.4	25.07	30.06	35.04	40.02	45.08	62.98	62.98
R	7.5	11	15	20	25	30	37	43	43	43
D1	1	1.5	1.5	2	2	3	3	4	4	4



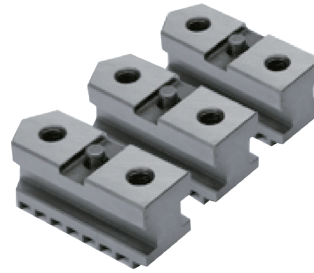
IC JAWS DIMENSIONS

	IC-08	IC-10	IC-12	IC-14	IC-16	IC-18	IC-20	IC-24	IC-28	IC-32
L1	75	90	100	110	120	130	140	160	180	200
L2	44	54	60	67	73.5	80	85	99	100	120
L3	21	26	28	31	33.5	37	40	46	47	55
L4	55.5	61.5	70.5	75.5	84	89	106	116.4	111	138
L5	12	14	16	18	20	22	24	28.2	28	30
L6	12	14	16	18	20	22	24	28.2	29	30
L7	30	30	35	35	40	40	45	50	50	60
B1	16	16	19	19	22.5	22.5	27.5	31	30	40
B2	10.3	10.3	11.5	11.5	11.5	11.5	16.4	16.4	15.3	20
B3	10	10	13.6	14.6	15	15	16	18	20	34
K1	30	35	40	45	50	55	60	70	70	89
Threads /inch	5/inch	5/inch	4/inch	4/inch	4/inch	4/inch	3.5/inch	3.5/inch	4/inch	6.0 mm

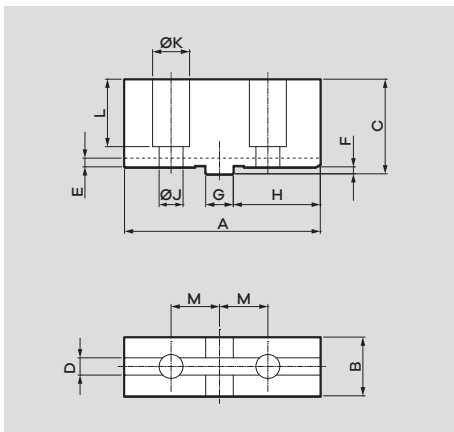
FTU-Jaw Scroll Chuck Jaws



FTU Soft Jaws

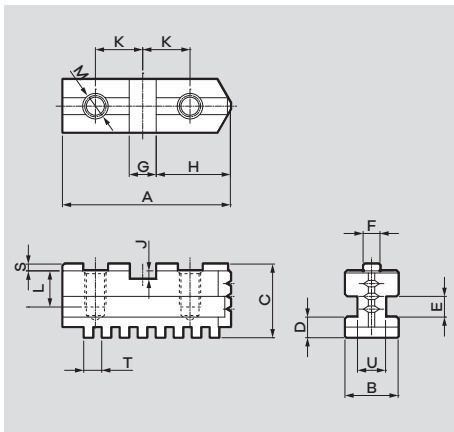


FTU Base Jaws



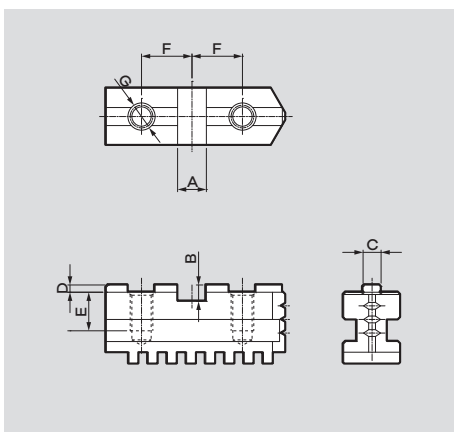
FTU SOFT JAWS DIMENSIONS

	FTU-125	FTU-160	FTU-200	FTU-250	FTU-315
A	64	78	90	106	120
B	22	25	27	32.5	37
C	41.5	41.5	43.5	51.5	55
D	7.94	7.94	7.94	12.7	12.7
E	4	4	4	4	4
F	3.2	3.2	3.2	3.2	3.2
G	12.68	12.68	12.68	19.03	19.03
H	25	34	40	45	53
J	9	9	11	14	14
K	15	15	17	20	20
L	29	29	31	38	40
M	16	19.05	22.25	27	31.75



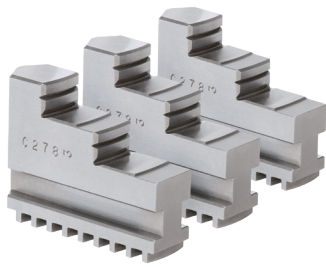
FTU BASE JAWS 1 DIMENSIONS

	FTU-125	FTU-160	FTU-200	FTU-250	FTU-315
A	54	65	79	92	110
B	20	20	25	28	32
C	29.5	30	34.6	39.7	45.6
D	7.7	8.2	9.7	10.9	13.4
E	8.13	8.13	9.74	12.3	16.3
F	7.94	7.94	7.94	12.7	12.7
G	12.68	12.68	12.68	19.03	19.03
H	22.6	28.6	34.9	39.7	47.6
J	4	4	4	4	4
K	16	19.05	22.25	27	31.75
L	14	14	17	20	20
M	M8	M8	M10	M12	M12
S	3.2	3.2	3.2	3.2	3.2
T	6.35	7.26	8.47	8.47	10.16
U	9.2	9.2	13.2	15.5	17

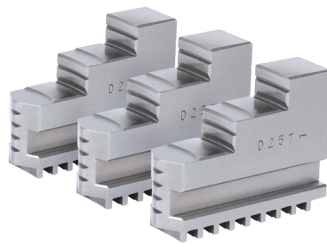


FTU BASE JAWS 2 DIMENSIONS

	FTU-125	FTU-160	FTU-200	FTU-250	FTU-315
A	12.68 ^{+0.011} ₀	12.68 ^{+0.011} ₀	12.68 ^{+0.011} ₀	19.03 ^{+0.013} ₀	19.03 ^{+0.013} ₀
B	7.2	7.2	7.2	7.2	7.2
C	7.94 ^{-0.005} _{-0.012}	7.94 ^{-0.005} _{-0.012}	7.94 ^{-0.005} _{-0.012}	12.7 ^{-0.005} _{-0.012}	12.7 ^{-0.005} _{-0.015}
D	3.2	3.2	3.2	3.2	3.2
E	14	14	17	20	20
F	16	19.05	22.25	27	31.75
G	M8	M8	M10	M12	M12



FTU Internal Jaws



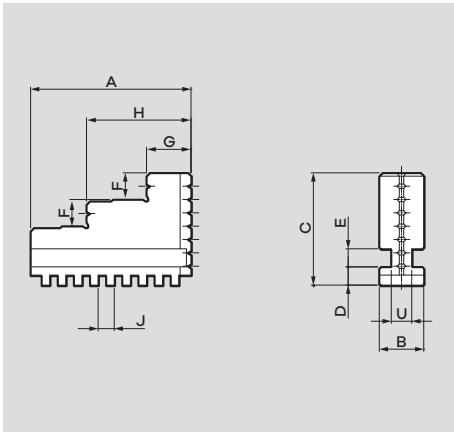
FTU External Jaws



FTU Hard Jaws

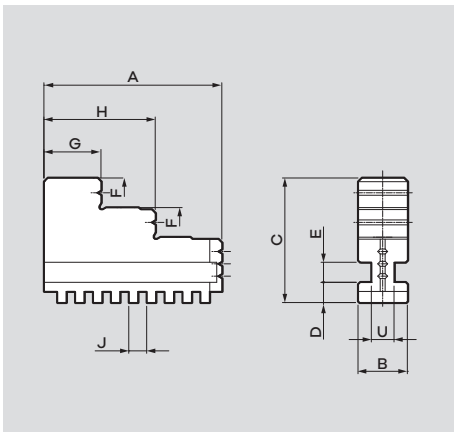
FTU INTERNAL JAWS DIMENSIONS

	FTU-125	FTU-160	FTU-200	FTU-250	FTU-315
A	50	65	75	85	110
B	20	20	25	28	32
C	39.5	50.5	57.5	65.5	80.5
D	7.7	8.2	9.7	10.9	13.4
E	8.13	8.13	9.74	12.3	16.3
F	8	12	12	14	16
G	15	20	23	26	35
H	30	47	48	54	70
J	6.35	7.26	8.47	8.47	10.16
U	9.2	9.2	13.2	15.5	17



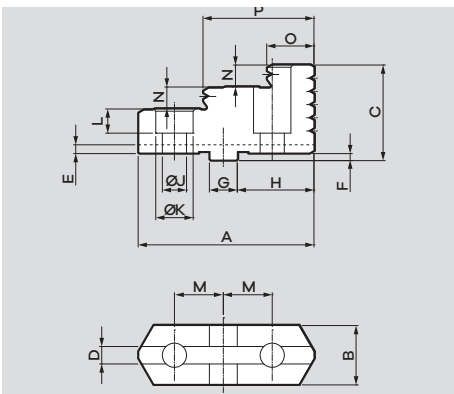
FTU EXTERNAL JAWS DIMENSIONS

	FTU-125	FTU-160	FTU-200	FTU-250	FTU-315
A	50	65	75	85	110
B	20	20	25	28	32
C	39.5	50.5	57.5	65.5	80.5
D	7.7	8.2	9.7	10.9	13.4
E	8.13	8.13	9.74	12.3	16.3
F	8	12	12	14	16
G	14	16	20	24	32
H	29	38	45	52	67
J	6.35	7.26	8.47	8.47	10.16
U	9.2	9.2	13.2	15.5	17



FTU HARD JAWS DIMENSIONS

	FTU-125	FTU-160	FTU-200	FTU-250	FTU-315
A	56	67	80	95	114
B	22	25	27	32	37
C	39.5	41.5	43.5	51.2	54.2
D	7.94	7.94	7.94	12.7	12.7
E	4	4	4	4	4
F	3.2	3.2	3.2	3.2	3.2
G	12.68	12.68	12.68	19.03	19.03
H	22.6	28.6	34.9	39.7	47.6
J	9	9	11	13	13
K	15	15	17	19	19
L	11	11	11	13.5	14.5
M	16	19.05	22.25	27	31.75
N	8	9	10	12	13
O	14.5	18.5	21.5	24.5	30.5
P	35	42.5	50.5	59.5	70.5



Accessories

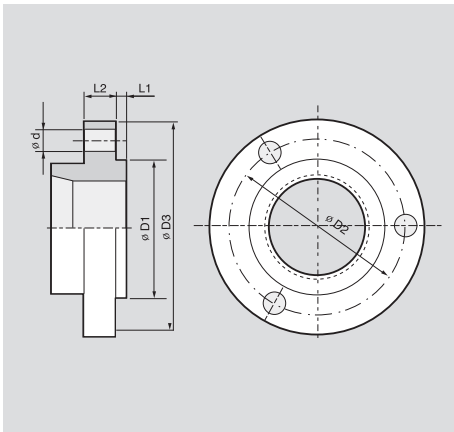
Scroll Chuck Accessories



IC Screw Bar

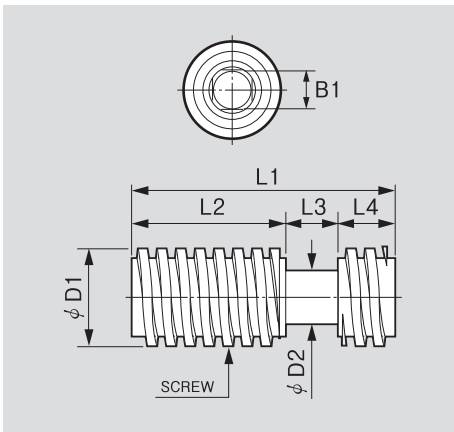


IC Stopper



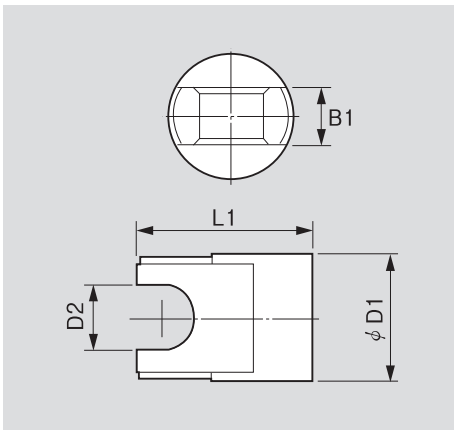
SC ADAPTOR DIMENSIONS

		SC-85	SC-110	SC-130	SC-165	SC-190	SC-230	SC-273	SC-310	SC-355
$\Phi D1$	base length	60	80	100	130	155	190	230	260	300
	tolerance	-0.021	-0.021	-0.025	-0.028	-0.028	-0.033	-0.033	-0.036	-0.036
$\Phi D2$	base length	73	95	115	147	172	210	250	285	328
	tolerance	± 0.2	± 0.2	± 0.2	± 0.2	± 0.2	± 0.2	± 0.2	± 0.3	± 0.3
$\Phi D3$		88	115	135	170	195	235	275	310	355
$L1$		3	4	4	4.5	4.5	5.5	5.5	6.5	6.5
$L2$		10	12	12	15	18	20	20	22	26
Φd		6.6	9	11	11	13	13	13	13	13



IC SCREW BAR DIMENSIONS

	IC-08	IC-10	IC-12	IC-14	IC-16	IC-18	IC-20	IC-24	IC-28	IC-32
$L1$	70	91.5	111	130	149	169	189	233	299	330
$L2$	41	58	73	85.5	108.5	123.5	137	162	193	216
$L3$	14	14	16	16	18	18	20	20	18	24
$L4$	15	19.5	22	28.5	22.5	27.5	32	51	68	90
$\Phi D1$	26	26	30	30	34	34	35	38	38	44
$\Phi D2$	14	14	16	16	18	18	19	20	22	28
$B1$	10	10	12	12	14	14	14	14	14	19
Thread / inch	5/inch	5/inch	4/inch	4/inch	4/inch	4/inch	3.5/inch	3.5/inch	4/inch	6/inch



IC STOPPER DIMENSIONS

	IC-08	IC-10	IC-12	IC-14	IC-16	IC-18	IC-20	IC-24	IC-28	IC-32
$L1$	42	45	51	49	55	60	53	59	57.5	59
$\Phi D1$	26	26	30	30	34	34	35	38	38	44
$\Phi D2$	14.5	14.5	16.5	16.5	18.5	18.5	19.5	20.5	23	27.5
$B1$	14	14	16	16	18	18	20	20	18	24



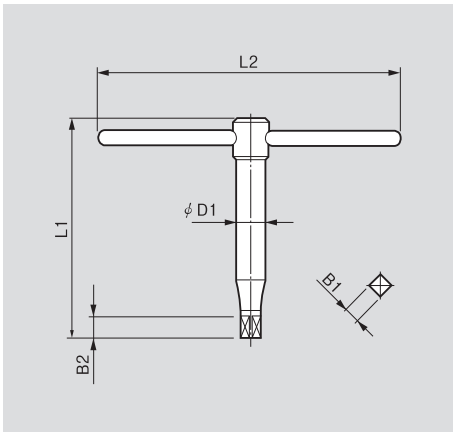
Scroll Chuck Handles



Scroll Chuck Mounting Bolts(SC Type)



Scroll Chuck Mounting Bolts(IC Type)



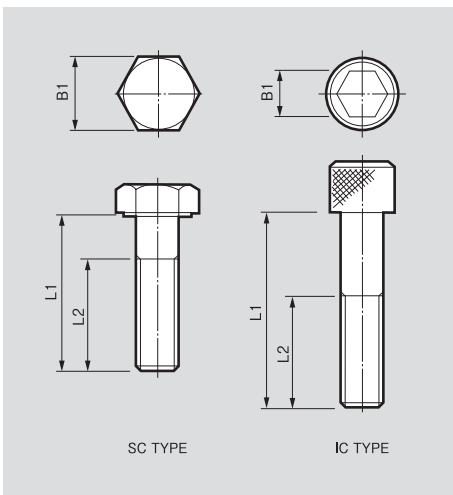
SC, FTC, SL, IC HANDLE DIMENSIONS

	SC-85	SC-110	SC-130	SC-165	SC-190	SC-230	SC-273	SC-310	SC-355	SC-405
L1	65	70	75	120	160	160	160	200	200	170
L2	110	140	170	210	240	290	330	390	390	450
B1	7	8	8	10	11	12	12	14	14	15
B2	10	11	11	13	14	15	15	18	18	20
ØD1	15	17	20	20	20	22	22	26	26	26

	FTC-460	FTC-535	FTC-610	SL-08	SL-10	SL-12
L1	205	230	230	200	240	280
L2	500	500	500	240	270	320
B1	17	6*-22	6*-22	11	12	14
B2	20	26	26	16	16	18
ØD1	25	30	30	20	22	26

	IC-08	IC-10	IC-12	IC-14	IC-16	IC-18	IC-20	IC-24	IC-28	IC-32
L1	130	150	170	170	220	220	220	230	300	300
L2	200	250	300	350	400	400	450	500	500	500
B1	10	10	12	12	14	14	14	14	14	19
B2	14	14	17	17	19	19	20	20	20	20
ØD1	15	18	19	19	22	22	22	25	28	35

* 6* = Hexagon



SC, FTC, IC MOUNTING BOLT DIMENSIONS

	SC-85	SC-110	SC-130	SC-165	SC-190	SC-230	SC-273	SC-310	SC-355
Bolt size	M6xP1.0	M8xP1.25	M8xP1.25	M10xP1.5	M10xP1.5	M12xP1.75	M12xP1.75	M12xP1.75	M12xP1.75
QTR	3	3	3	3	3	3	3	3	6
L1	22	25	25	32	36	40	40	45	50
L2	18	20	20	26	26	30	30	30	30
ØB1	10	13	13	17	17	19	19	19	19

	FTC-460	FTC-535	FTC-610
Bolt size	M16xP125	M20xP140	M20xP140
QTR	6	6	6
L1	125	140	140
L2	38	52	52
ØB1	24	30	30

	IC-08	IC-10	IC-12	IC-14	IC-16	IC-18	IC-20	IC-24	IC-28	IC-32
Bolt size	M12xP1.75	M12xP1.75	M12xP1.75	M12xP1.75	M16xP2.0	M16xP2.0	M16xP2.0	M20xP2.5	M20xP2.5	M20xP2.5
QTR	4	4	4	4	4	4	4	4	8	8
L1	60	85	100	100	110	110	120	135	120	130
L2	35	40	55	55	60	60	60	70	54	54
ØB1	10	10	10	10	14	14	14	17	17	17